

Product Name: PSMA2 Rabbit Monoclonal Antibody**Catalog #: AMRe84568**

For research use only.

Summary

Description	Recombinant rabbit monoclonal antibody
Host	Rabbit
Application	WB,IHC,ICC/IF,ICC,FC
Reactivity	Human,Mouse,Rat
Conjugation	Unconjugated
Modification	Unmodified
Isotype	IgG
Clonality	Monoclonal
Form	Liquid
Concentration	
Storage	Aliquot and store at -20°C (valid for 12 months). Avoid freeze/thaw cycles.
Shipping	Ice bags
Buffer	Purified antibody in PBS with 0.05% sodium azide,0.05% protective protein and 50% glycerol.
Purification	Affinity Purification

Application

Dilution Ratio	WB 1:1000-1:2000,IHC 1:100-1:200,ICC/IF 1:50-1:200,ICC 1:50-1:200,FC 1:20-1:100
Molecular Weight	Calculated MW: 26 kDa ; Observed MW: 25 kDa

Antigen Information

Gene Name	PSMA2
Alternative Names	HC3; PMSA2; Proteasome component C3; PSC2; PSC3; psmA2;;PSMA2
Gene ID	
SwissProt ID	P25787
Immunogen	A synthesized peptide derived from human PSMA2

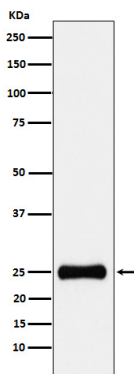
Background

Component of the 20S core proteasome complex involved in the proteolytic degradation of most intracellular proteins. This complex plays numerous essential roles within the cell by associating with different regulatory particles. Associated with two

19S regulatory particles, forms the 26S proteasome and thus participates in the ATP-dependent degradation of ubiquitinated proteins.

Research Area

Image Data



Western blot analysis of PSMA2 expression in HepG2 cell lysate.