

Product Name: Timeless Rabbit Monoclonal Antibody**Catalog #: AMRe84566**

For research use only.

Summary

Description	Recombinant rabbit monoclonal antibody
Host	Rabbit
Application	WB,IHC,ICC/IF,ICC
Reactivity	Human
Conjugation	Unconjugated
Modification	Unmodified
Isotype	IgG
Clonality	Monoclonal
Form	Liquid
Concentration	
Storage	Aliquot and store at -20°C (valid for 12 months). Avoid freeze/thaw cycles.
Shipping	Ice bags
Buffer	Purified antibody in PBS with 0.05% sodium azide,0.05% protective protein and 50% glycerol.
Purification	Affinity Purification

Application

Dilution Ratio	WB 1:1000-1:2000,IHC 1:100-1:200,ICC/IF 1:50-1:200,ICC 1:50-1:200
Molecular Weight	Calculated MW: 139 kDa ; Observed MW: 150 kDa

Antigen Information

Gene Name	Timeless
Alternative Names	hTIM; TIM; TIM1; Timeless; timeless circadian clock 1; TIMELESS1;;Timeless
Gene ID	
SwissProt ID	Q9UNS1
Immunogen	A synthesized peptide derived from human Timeless

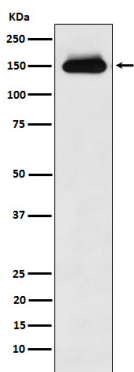
Background

Plays an important role in the control of DNA replication, maintenance of replication fork stability, maintenance of genome stability throughout normal DNA replication, DNA repair and in the regulation of the circadian clock. Required to stabilize

replication forks during DNA replication by forming a complex with TIPIN: this complex regulates DNA replication processes under both normal and stress conditions, stabilizes replication forks and influences both CHEK1 phosphorylation and the intra-S phase checkpoint in response to genotoxic stress.

Research Area

Image Data



Western blot analysis of Timeless expression in HeLa cell lysate.