

Product Name: Lactoferrin Rabbit Monoclonal Antibody**Catalog #: AMRe84559**

For research use only.

Summary

Description	Recombinant rabbit monoclonal antibody
Host	Rabbit
Application	WB,ICC,IP
Reactivity	Human
Conjugation	Unconjugated
Modification	Unmodified
Isotype	IgG
Clonality	Monoclonal
Form	Liquid
Concentration	
Storage	Aliquot and store at -20°C (valid for 12 months). Avoid freeze/thaw cycles.
Shipping	Ice bags
Buffer	Purified antibody in PBS with 0.05% sodium azide, 0.05% protective protein and 50% glycerol.
Purification	Affinity Purification

Application

Dilution Ratio	WB 1:1000-1:2000, ICC 1:50-1:200, IP 1:20-1:50
Molecular Weight	Calculated MW: 78 kDa ; Observed MW: 85 kDa

Antigen Information

Gene Name	Lactoferrin
Alternative Names	GIG12; HLF2; Kaliocin 1; Lactoferrin; Lactotransferrin; LTF; Neutrophil lactoferrin; Talalactoferrin;;Lactoferrin
Gene ID	
SwissProt ID	P02788
Immunogen	A synthesized peptide derived from human Lactoferrin

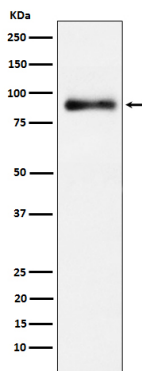
Background

Transferrins are iron binding transport proteins which can bind two Fe³⁺ ions in association with the binding of an anion,

usually bicarbonate.

Research Area

Image Data



Western blot analysis of Lactoferrin expression in HeLa cell lysate.