

---

**Product Name: CEND1 Rabbit Monoclonal Antibody****Catalog #: AMRe84551**

For research use only.

**Summary**

<b>Description</b>	Recombinant rabbit monoclonal antibody
<b>Host</b>	Rabbit
<b>Application</b>	WB,IHC,ICC/IF,ICC,IP
<b>Reactivity</b>	Human,Mouse,Rat
<b>Conjugation</b>	Unconjugated
<b>Modification</b>	Unmodified
<b>Isotype</b>	IgG
<b>Clonality</b>	Monoclonal
<b>Form</b>	Liquid
<b>Concentration</b>	
<b>Storage</b>	Aliquot and store at -20°C (valid for 12 months). Avoid freeze/thaw cycles.
<b>Shipping</b>	Ice bags
<b>Buffer</b>	Purified antibody in PBS with 0.05% sodium azide,0.05% protective protein and 50% glycerol.
<b>Purification</b>	Affinity Purification

**Application**

<b>Dilution Ratio</b>	WB 1:1000-1:2000,IHC 1:100-1:200,ICC/IF 1:50-1:200,ICC 1:50-1:200,IP 1:20-1:50
<b>Molecular Weight</b>	Calculated MW: 15 kDa ; Observed MW: 22 kDa

**Antigen Information**

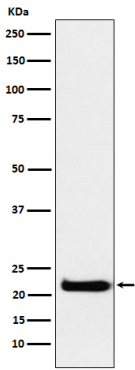
<b>Gene Name</b>	CEND1
<b>Alternative Names</b>	BM88;;CEND1
<b>Gene ID</b>	
<b>SwissProt ID</b>	Q8N111
<b>Immunogen</b>	A synthesized peptide derived from human CEND1

**Background**

Involved in neuronal differentiation.

## Research Area

## Image Data



Western blot analysis of CEND1 expression in U-87 MG cell lysate.