

Product Name: Phospho-eIF4EBP1/2/3(T46+T46+T32)
Rabbit Monoclonal Antibody
Catalog #: AMRe84539



Summary

Production Name	Phospho-eIF4EBP1/2/3(T46+T46+T32) Rabbit Monoclonal Antibody
Description	Rabbit Monoclonal antibody
Host	Rabbit
Application	WB,IHC
Reactivity	Human,Mouse

Performance

Conjugation	Unconjugated
Modification	Phosphorylated
Isotype	IgG
Clonality	Monoclonal
Form	Liquid
Storage	Store at 4°C short term. Aliquot and store at -20°C long term. Avoid freeze/thaw cycles.
Buffer	Purified antibody in PBS with 0.05% sodium azide,0.05% protective protein and 50% glycerol.
Purification	Affinity Purification

Immunogen

Gene Name	Phospho-eIF4EBP1/2/3(T46+T46+T32)
Alternative Names	4EBP1; 4EBP2; 4EBP3; eIF4E binding protein 1; eIF4E binding protein 2; eIF4E binding protein 3; PHAS1;;p-4E BP1/2/3 (T46/T46/T32)
Gene ID	
SwissProt ID	Q13541/Q13542/O60516.A synthesized peptide derived from human 4E BP1 around the phosphorylation site of T46

Application

Dilution Ratio	WB:1:1000-1:2000,IHC:1:100-1:200
Molecular Weight	Calculated MW: 11,13 kDa ; Observed MW: 13-19 kDa

Product Name: Phospho-eIF4EBP1/2/3(T46+T46+T32)
Rabbit Monoclonal Antibody
Catalog #: AMRe84539

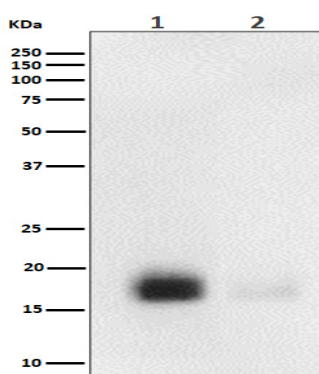


Background

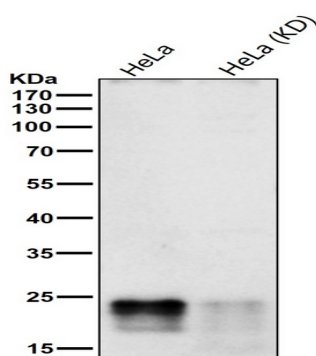
eIF4EBP1 is a member of a family of translation repressor proteins. The protein directly interacts with eukaryotic translation initiation factor 4E (eIF4E), which is a limiting component of the multisubunit complex that recruits 40S ribosomal subunits to the 5' end of mRNAs.

Research Area

Image Data



Western blot analysis of Phospho-eIF4EBP1/2/3 (T46+T46+T32) expression in 293 treated with FBS+293.



All lanes use the Antibody at 1:1K dilution for 1 hour at room temperature.

Note

For research use only.