
Product Name: SRSF3 Rabbit Monoclonal Antibody**Catalog #: AMRe84537**

For research use only.

Summary

Description	Recombinant rabbit monoclonal antibody
Host	Rabbit
Application	WB,IHC,ICC/IF,ICC,FC
Reactivity	Human,Mouse,Rat
Conjugation	Unconjugated
Modification	Unmodified
Isotype	IgG
Clonality	Monoclonal
Form	Liquid
Concentration	
Storage	Aliquot and store at -20°C (valid for 12 months). Avoid freeze/thaw cycles.
Shipping	Ice bags
Buffer	Purified antibody in PBS with 0.05% sodium azide,0.05% protective protein and 50% glycerol.
Purification	Affinity Purification

Application

Dilution Ratio	WB 1:1000-1:2000,IHC 1:100-1:200,ICC/IF 1:50-1:200,ICC 1:50-1:200,FC 1:20-1:100
Molecular Weight	19 kDa

Antigen Information

Gene Name	SRSF3
Alternative Names	Splicing factor; SRp20; SRSF3; X16;;SRSF3
Gene ID	
SwissProt ID	P84103
Immunogen	A synthesized peptide derived from human SRSF3

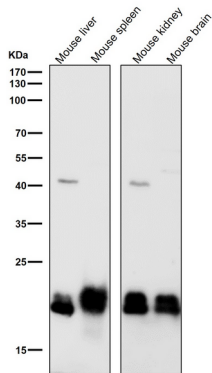
Background

Splicing factor, which binds the consensus motif 5'-C[ACU][AU]C[ACU][AC]C-3' within pre-mRNA and promotes specific exons inclusion during alternative splicing.Interaction with YTHDC1, a RNA-binding protein that recognizes and binds N6-

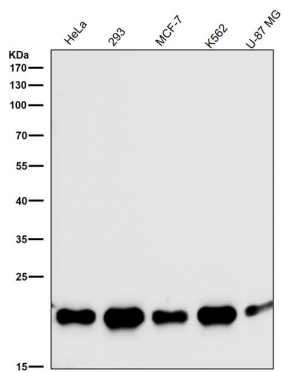
methyladenosine (m6A)-containing RNAs, promotes recruitment of SRSF3 to its mRNA-binding elements adjacent to m6A sites within exons.

Research Area

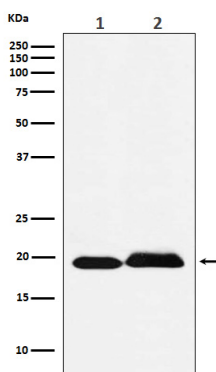
Image Data



All lanes use the Antibody at 1:2K dilution for 1 hour at room temperature.



All lanes use the Antibody at 1:2K dilution for 1 hour at room temperature.



Western blot analysis of SRSF3 expression in (1) Jurkat cell lysate; (2) Rat brain lysate.