

---

**Product Name: Aminopeptidase A/CD249 Rabbit Monoclonal Antibody****Catalog #: AMRe84534**

For research use only.

**Summary**

<b>Description</b>	Recombinant rabbit monoclonal antibody
<b>Host</b>	Rabbit
<b>Application</b>	WB,IHC
<b>Reactivity</b>	Human
<b>Conjugation</b>	Unconjugated
<b>Modification</b>	Unmodified
<b>Isotype</b>	IgG
<b>Clonality</b>	Monoclonal
<b>Form</b>	Liquid
<b>Concentration</b>	0.71mg/ml. The concentration of this product may be batch-dependent.
<b>Storage</b>	Aliquot and store at -20°C (valid for 12 months). Avoid freeze/thaw cycles.
<b>Shipping</b>	Ice bags
<b>Buffer</b>	Purified antibody in PBS with 0.05% sodium azide,0.05% protective protein and 50% glycerol.
<b>Purification</b>	Affinity Purification

**Application**

<b>Dilution Ratio</b>	WB 1:1000-1:2000,IHC 1:100-1:200
<b>Molecular Weight</b>	Calculated MW: 109 kDa ; Observed MW: 160 kDa

**Antigen Information**

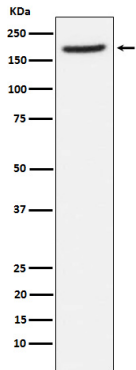
<b>Gene Name</b>	Aminopeptidase A/CD249
<b>Alternative Names</b>	Aminopeptidase A; APA; bp1; CD249; EAP; Enpep; Gp160; Ly51;;Glutamyl aminopeptidase
<b>Gene ID</b>	
<b>SwissProt ID</b>	Q07075
<b>Immunogen</b>	A synthesized peptide derived from human Glutamyl aminopeptidase

**Background**

Appears to have a role in the catabolic pathway of the renin-angiotensin system. Probably plays a role in regulating growth and differentiation of early B-lineage cells.

## Research Area

## Image Data



Western blot analysis of Aminopeptidase A / CD249 expression in human fetal lung lysate.

All lanes use the Antibody at 1:1K dilution for 1 hour at room temperature.

