

**Product Name: TEAD1 Rabbit Monoclonal Antibody****Catalog #: AMRe84532**

For research use only.

**Summary**

|                      |   |
|----------------------|---|
| <b>Description</b>   | Recombinant rabbit monoclonal antibody  |
| <b>Host</b>          | Rabbit  |
| <b>Application</b>   | WB,IHC,IP   |
| <b>Reactivity</b>    | Human,Mouse,Rat   |
| <b>Conjugation</b>   | Unconjugated  |
| <b>Modification</b>  | Unmodified  |
| <b>Isotype</b>       | IgG   |
| <b>Clonality</b>     | Monoclonal  |
| <b>Form</b>          | Liquid  |
| <b>Concentration</b> | 0.49mg/ml. The concentration of this product may be batch-dependent.                        |
| <b>Storage</b>       | Aliquot and store at -20°C (valid for 12 months). Avoid freeze/thaw cycles.                 |
| <b>Shipping</b>      | Ice bags  |
| <b>Buffer</b>        | Purified antibody in PBS with 0.05% sodium azide,0.05% protective protein and 50% glycerol. |
| <b>Purification</b>  | Affinity Purification   |

**Application**

|                         |   |
|-------------------------|---|
| <b>Dilution Ratio</b>   | WB 1:1000-1:2000,IHC 1:100-1:200,IP 1:20-1:50 |
| <b>Molecular Weight</b> | Calculated MW: 48 kDa ; Observed MW: 52 kDa   |

**Antigen Information**

|                          |   |
|--------------------------|---|
| <b>Gene Name</b>         | TEAD1   |
| <b>Alternative Names</b> | NTEF1; Protein GT IIC; REF1; TCF13; TEA domain family member 1; TEAD1; TEF1; Transcription factor 13; Transcriptional enhancer factor TEF1;;TEAD1 |
| <b>Gene ID</b>           |   |
| <b>SwissProt ID</b>      | P28347  |
| <b>Immunogen</b>         | A synthesized peptide derived from human TEAD1  |

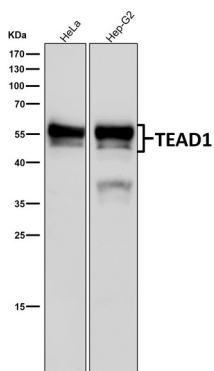
**Background**

Transcription factor which plays a key role in the Hippo signaling pathway, a pathway involved in organ size control and tumor

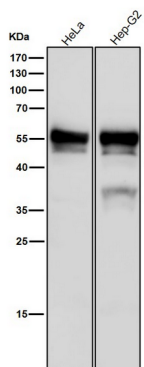
suppression by restricting proliferation and promoting apoptosis.

## Research Area

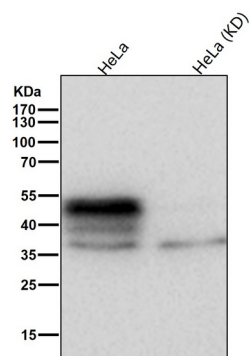
## Image Data



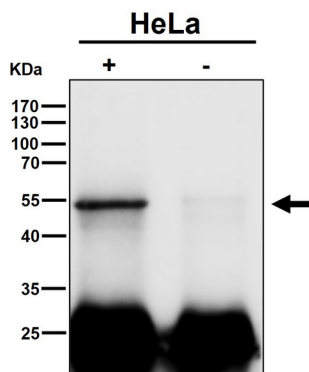
Western blot analysis of TEAD1 expression in HeLa cell lysate.



All lanes use the Antibody at 1:2K dilution for 1 hour at room temperature.



All lanes use the Antibody at 1:2K dilution for 1 hour at room temperature.



Immunoprecipitate (IP) analysis using the Antibody at 1:50 dilution. (wb at 1:6K dilution)