
Product Name: IL15RA Rabbit Monoclonal Antibody**Catalog #: AMRe84521**

For research use only.

Summary

Description	Recombinant rabbit monoclonal antibody
Host	Rabbit
Application	WB,ICC
Reactivity	Human
Conjugation	Unconjugated
Modification	Unmodified
Isotype	IgG
Clonality	Monoclonal
Form	Liquid
Concentration	
Storage	Aliquot and store at -20°C (valid for 12 months). Avoid freeze/thaw cycles.
Shipping	Ice bags
Buffer	Purified antibody in PBS with 0.05% sodium azide,0.05% protective protein and 50% glycerol.
Purification	Affinity Purification

Application

Dilution Ratio	WB 1:1000-1:2000,ICC 1:50-1:200
Molecular Weight	Calculated MW: 28 kDa ; Observed MW: 38 kDa

Antigen Information

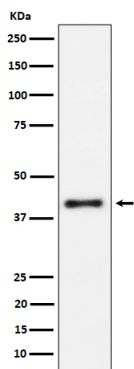
Gene Name	IL15RA CD215; IL 15R alpha; IL-15 receptor subunit alpha; IL-15R-alpha; IL-15RA; Il15ra; Interleukin
Alternative Names	15 receptor alpha; sIL-15 receptor subunit alpha; sIL-15R-alpha; sIL-15RA ; Soluble interleukin 15 receptor subunit alpha;;IL 15 receptor alpha
Gene ID	
SwissProt ID	Q13261
Immunogen	A synthesized peptide derived from human IL 15 receptor alpha

Background

Receptor for interleukin-15. Expression of different isoforms may alter or interfere with signal transduction. Isoform 5, isoform 6, isoform 7 and isoform 8 do not bind IL15. Signal transduction involves STAT3, STAT5, STAT6, JAK2 and SYK.

Research Area

Image Data



Western blot analysis of IL15RA expression in Raji cell lysate.