

---

**Product Name: CLASP1 Rabbit Monoclonal Antibody****Catalog #: AMRe84516**

For research use only.

**Summary**

<b>Description</b>	Recombinant rabbit monoclonal antibody
<b>Host</b>	Rabbit
<b>Application</b>	WB,IHC,ICC/IF,ICC,FC
<b>Reactivity</b>	Human,Mouse,Rat
<b>Conjugation</b>	Unconjugated
<b>Modification</b>	Unmodified
<b>Isotype</b>	IgG
<b>Clonality</b>	Monoclonal
<b>Form</b>	Liquid
<b>Concentration</b>	0.71mg/ml. The concentration of this product may be batch-dependent.
<b>Storage</b>	Aliquot and store at -20°C (valid for 12 months). Avoid freeze/thaw cycles.
<b>Shipping</b>	Ice bags
<b>Buffer</b>	Purified antibody in PBS with 0.05% sodium azide,0.05% protective protein and 50% glycerol.
<b>Purification</b>	Affinity Purification

**Application**

<b>Dilution Ratio</b>	WB 1:1000-1:2000,IHC 1:100-1:200,ICC/IF 1:50-1:200,ICC 1:50-1:200,FC 1:20-1:100
<b>Molecular Weight</b>	169 kDa

**Antigen Information**

<b>Gene Name</b>	CLASP1
<b>Alternative Names</b>	clasp1; hOrbit1; MAST1;;CLASP1
<b>Gene ID</b>	
<b>SwissProt ID</b>	Q7Z460
<b>Immunogen</b>	A synthesized peptide derived from human CLASP1

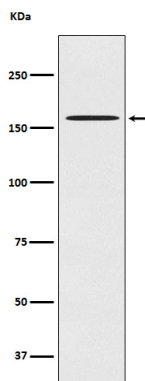
**Background**

Microtubule plus-end tracking protein that promotes the stabilization of dynamic microtubules. Involved in the nucleation of noncentrosomal microtubules originating from the trans-Golgi network (TGN). Required for the polarization of the cytoplasmic

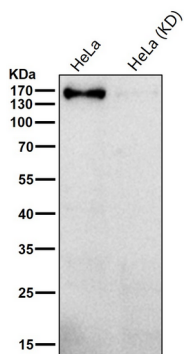
microtubule arrays in migrating cells towards the leading edge of the cell. May act at the cell cortex to enhance the frequency of rescue of depolymerizing microtubules by attaching their plus-ends to cortical platforms composed of ERC1 and PHLDB2.

## Research Area

## Image Data



Western blot analysis of CLASP1 expression in HeLa cell lysate.



All lanes use the Antibody at 1:1K dilution for 1 hour at room temperature.