

---

**Product Name: GCET2 Rabbit Monoclonal Antibody****Catalog #: AMRe84513**

For research use only.

**Summary**

<b>Description</b>	Recombinant rabbit monoclonal antibody
<b>Host</b>	Rabbit
<b>Application</b>	IHC,ICC/IF,ICC,FC
<b>Reactivity</b>	Human
<b>Conjugation</b>	Unconjugated
<b>Modification</b>	Unmodified
<b>Isotype</b>	IgG
<b>Clonality</b>	Monoclonal
<b>Form</b>	Liquid
<b>Concentration</b>	
<b>Storage</b>	Aliquot and store at -20°C (valid for 12 months). Avoid freeze/thaw cycles.
<b>Shipping</b>	Ice bags
<b>Buffer</b>	Purified antibody in PBS with 0.05% sodium azide,0.05% protective protein and 50% glycerol.
<b>Purification</b>	Affinity Purification

**Application**

<b>Dilution Ratio</b>	IHC 1:100-1:200,ICC/IF 1:50-1:200,ICC 1:50-1:200,FC 1:20-1:100
<b>Molecular Weight</b>	21 kDa

**Antigen Information**

<b>Gene Name</b>	GCET2
<b>Alternative Names</b>	GCAT2; Gcet; Gcsam; hGAL; M17; M17 L;;GCSAM
<b>Gene ID</b>	
<b>SwissProt ID</b>	Q8N6F7
<b>Immunogen</b>	A synthesized peptide derived from human GCSAM

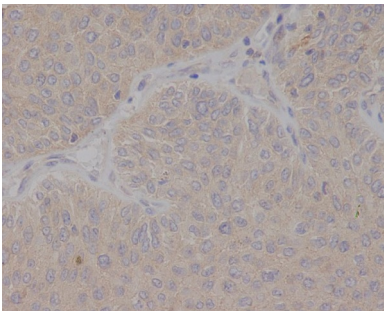
**Background**

Involved in the negative regulation of lymphocyte motility. It mediates the migration-inhibitory effects of IL6. Serves as a positive regulator of the RhoA signaling pathway. Enhancement of RhoA activation results in inhibition of lymphocyte and

lymphoma cell motility by activation of its downstream effector ROCK. Is a regulator of B-cell receptor signaling, that acts through SYK kinase activation.

## Research Area

## Image Data



Immunohistochemical analysis of paraffin-embedded human bladder cancer, using GCET2 Antibody.