
Product Name: TBX21 Rabbit Monoclonal Antibody**Catalog #: AMRe84506**

For research use only.

Summary

Description	Recombinant rabbit monoclonal antibody
Host	Rabbit
Application	IHC
Reactivity	Human
Conjugation	Unconjugated
Modification	Unmodified
Isotype	IgG
Clonality	Monoclonal
Form	Liquid
Concentration	
Storage	Aliquot and store at -20°C (valid for 12 months). Avoid freeze/thaw cycles.
Shipping	Ice bags
Buffer	Purified antibody in PBS with 0.05% sodium azide, 0.05% protective protein and 50% glycerol.
Purification	Affinity Purification

Application

Dilution Ratio	IHC 1:100-1:200
Molecular Weight	58 kDa

Antigen Information

Gene Name	TBX21
Alternative Names	T bet; T box 21; T PET; TBET; TBLYM; Tbx21; TPET;;TBX21
Gene ID	
SwissProt ID	Q9UL17
Immunogen	A synthesized peptide derived from human TBX21

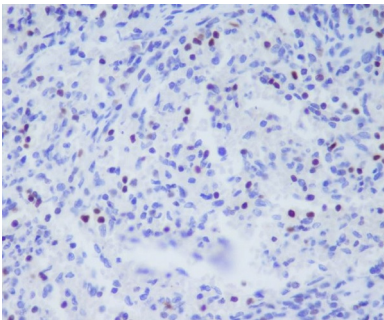
Background

Lineage-defining transcription factor which initiates Th1 lineage development from naive Th precursor cells both by activating Th1 genetic programs and by repressing the opposing Th2 and Th17 genetic programs. Activates transcription of a set of genes

important for Th1 cell function, including those encoding IFN-gamma and the chemokine receptor CXCR3. Induces permissive chromatin accessibility and CpG methylation in IFNG.

Research Area

Image Data



Immunohistochemical analysis of paraffin-embedded human spleen, using T-bet/Tbx21 Antibody.