
Product Name: Mad2L1 Rabbit Monoclonal Antibody**Catalog #: AMRe84499**

For research use only.

Summary

Description	Recombinant rabbit monoclonal antibody
Host	Rabbit
Application	WB
Reactivity	Human
Conjugation	Unconjugated
Modification	Unmodified
Isotype	IgG
Clonality	Monoclonal
Form	Liquid
Concentration	
Storage	Aliquot and store at -20°C (valid for 12 months). Avoid freeze/thaw cycles.
Shipping	Ice bags
Buffer	Purified antibody in PBS with 0.05% sodium azide, 0.05% protective protein and 50% glycerol.
Purification	Affinity Purification

Application

Dilution Ratio	WB 1:1000-1:2000
Molecular Weight	24 kDa

Antigen Information

Gene Name	Mad2L1
Alternative Names	HsMAD2; MAD 2; MAD 2A; MAD2 like 1; Mad2l1;;HsMAD2
Gene ID	
SwissProt ID	Q13257
Immunogen	A synthesized peptide derived from human HsMAD2

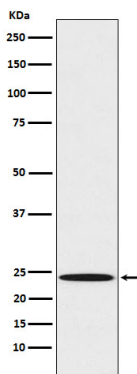
Background

Component of the spindle-assembly checkpoint that prevents the onset of anaphase until all chromosomes are properly aligned at the metaphase plate. Required for the execution of the mitotic checkpoint which monitors the process of

kinetochore-spindle attachment and inhibits the activity of the anaphase promoting complex by sequestering CDC20 until all chromosomes are aligned at the metaphase plate.

Research Area

Image Data



Western blot analysis of Mad2L1 expression in A431 cell lysate.