
Product Name: CBR1 Rabbit Monoclonal Antibody**Catalog #: AMRe84491**

For research use only.

Summary

Description	Recombinant rabbit monoclonal antibody
Host	Rabbit
Application	WB,IP
Reactivity	Human,Mouse,Rat
Conjugation	Unconjugated
Modification	Unmodified
Isotype	IgG
Clonality	Monoclonal
Form	Liquid
Concentration	
Storage	Aliquot and store at -20°C (valid for 12 months). Avoid freeze/thaw cycles.
Shipping	Ice bags
Buffer	Purified antibody in PBS with 0.05% sodium azide,0.05% protective protein and 50% glycerol.
Purification	Affinity Purification

Application

Dilution Ratio	WB 1:1000-1:2000,IP 1:20-1:50
Molecular Weight	30 kDa

Antigen Information

Gene Name	CBR1
Alternative Names	CBR1; CRN; SDR21C1;;CBR1
Gene ID	
SwissProt ID	P16152
Immunogen	A synthesized peptide derived from human CBR1

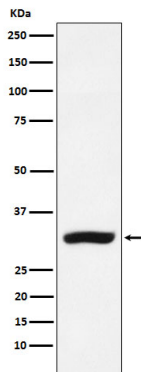
Background

NADPH-dependent reductase with broad substrate specificity. Catalyzes the reduction of a wide variety of carbonyl compounds including quinones, prostaglandins, menadione, plus various xenobiotics. Catalyzes the reduction of the antitumor

anthracyclines doxorubicin and daunorubicin to the cardiotoxic compounds doxorubicinol and daunorubicinol.

Research Area

Image Data



Western blot analysis of CBR1 expression in MCF-7 cell lysate.