

**Product Name: eEF1A1 Rabbit Monoclonal Antibody****Catalog #: AMRe84488**

For research use only.

**Summary**

<b>Description</b>	Recombinant rabbit monoclonal antibody
<b>Host</b>	Rabbit
<b>Application</b>	WB,IHC,ICC/IF,ICC,FC,IP
<b>Reactivity</b>	Human,Mouse,Rat
<b>Conjugation</b>	Unconjugated
<b>Modification</b>	Unmodified
<b>Isotype</b>	IgG
<b>Clonality</b>	Monoclonal
<b>Form</b>	Liquid
<b>Concentration</b>	0.61mg/ml. The concentration of this product may be batch-dependent.
<b>Storage</b>	Aliquot and store at -20°C (valid for 12 months). Avoid freeze/thaw cycles.
<b>Shipping</b>	Ice bags
<b>Buffer</b>	Purified antibody in PBS with 0.05% sodium azide,0.05% protective protein and 50% glycerol.
<b>Purification</b>	Affinity Purification

**Application**

<b>Dilution Ratio</b>	WB 1:1000-1:2000,IHC 1:100-1:200,ICC/IF 1:50-1:200,ICC 1:50-1:200,FC 1:20-1:100,IP 1:20-1:50
<b>Molecular Weight</b>	50 kDa

**Antigen Information**

<b>Gene Name</b>	eEF1A1
<b>Alternative Names</b>	EEF1A1; CCS-3; CCS3; EEF-1; EEF1A; EF-Tu; EF1A; GRAF-1EF; LENG7; PTI1;eEF1A-1;;eEF1A1
<b>Gene ID</b>	
<b>SwissProt ID</b>	P68104
<b>Immunogen</b>	A synthesized peptide derived from human eEF1A1

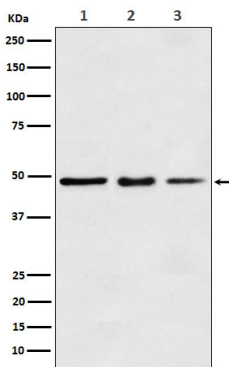
**Background**

Translation elongation factor that catalyzes the GTP-dependent binding of aminoacyl-tRNA (aa-tRNA) to the A-site of

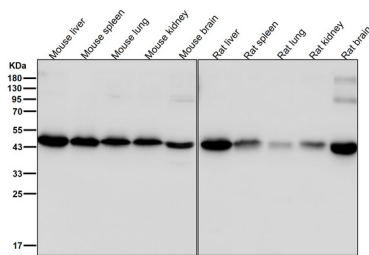
ribosomes during the elongation phase of protein synthesis.

## Research Area

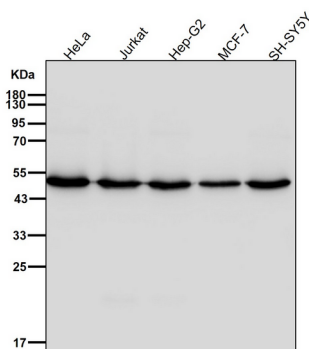
## Image Data



Western blot analysis of eEF1A1 expression in (1) MCF7 cell lysate; (2) Mouse kidney lysate; (3) Rat spleen lysate.



All lanes use the Antibody at 1:2K dilution for 1 hour at room temperature.



All lanes use the Antibody at 1:2K dilution for 1 hour at room temperature.