

Product Name: WIF1 Rabbit Monoclonal Antibody**Catalog #: AMRe84485**

For research use only.

Summary

Description	Recombinant rabbit monoclonal antibody
Host	Rabbit
Application	WB,IP
Reactivity	Human,Mouse,Rat
Conjugation	Unconjugated
Modification	Unmodified
Isotype	IgG
Clonality	Monoclonal
Form	Liquid
Concentration	
Storage	Aliquot and store at -20°C (valid for 12 months). Avoid freeze/thaw cycles.
Shipping	Ice bags
Buffer	Purified antibody in PBS with 0.05% sodium azide,0.05% protective protein and 50% glycerol.
Purification	Affinity Purification

Application

Dilution Ratio	WB 1:1000-1:2000,IP 1:20-1:50
Molecular Weight	Calculated MW: 42 kDa ; Observed MW: 41 kDa

Antigen Information

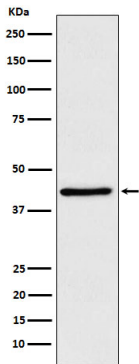
Gene Name	WIF1
Alternative Names	wif1; Wnt inhibitory factor 1;;WIF1
Gene ID	
SwissProt ID	Q9Y5W5
Immunogen	A synthesized peptide derived from human WIF1

Background

Binds to WNT proteins and inhibits their activities. May be involved in mesoderm segmentation.

Research Area

Image Data



Western blot analysis of WIF1 expression in HeLa cell lysate.