

---

**Product Name: ATP4B Rabbit Monoclonal Antibody****Catalog #: AMRe84473**

For research use only.

**Summary**

<b>Description</b>	Recombinant rabbit monoclonal antibody
<b>Host</b>	Rabbit
<b>Application</b>	WB
<b>Reactivity</b>	Human
<b>Conjugation</b>	Unconjugated
<b>Modification</b>	Unmodified
<b>Isotype</b>	IgG
<b>Clonality</b>	Monoclonal
<b>Form</b>	Liquid
<b>Concentration</b>	0.61mg/ml. The concentration of this product may be batch-dependent.
<b>Storage</b>	Aliquot and store at -20°C (valid for 12 months). Avoid freeze/thaw cycles.
<b>Shipping</b>	Ice bags
<b>Buffer</b>	Purified antibody in PBS with 0.05% sodium azide, 0.05% protective protein and 50% glycerol.
<b>Purification</b>	Affinity Purification

**Application**

<b>Dilution Ratio</b>	WB 1:1000-1:2000
<b>Molecular Weight</b>	Calculated MW: 33 kDa ; Observed MW: 55 kDa

**Antigen Information**

<b>Gene Name</b>	ATP4B
<b>Alternative Names</b>	ATP4B; Gastric H(+)/K(+) ATPase subunit beta; Potassium-transporting ATPase subunit beta; ATPase H+/K+ exchanging beta polypeptide; ATP4B
<b>Gene ID</b>	
<b>SwissProt ID</b>	P51164
<b>Immunogen</b>	A synthesized peptide derived from human ATP4B

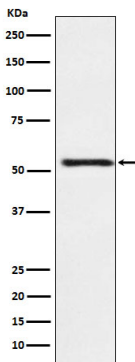
**Background**

Required for stabilization and maturation of the catalytic proton pump alpha subunit and may also involved in cell adhesion

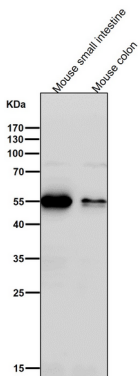
and establishing epithelial cell polarity.

## Research Area

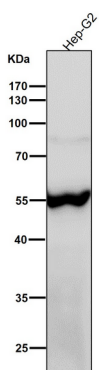
## Image Data



Western blot analysis of ATP4B expression in HepG2 cell lysate.



All lanes use the Antibody at 1:1K dilution for 1 hour at room temperature.



All lanes use the Antibody at 1:1K dilution for 1 hour at room temperature.