

Product Name: KLC3 Rabbit Monoclonal Antibody**Catalog #: AMRe84472**

For research use only.

Summary

Description	Recombinant rabbit monoclonal antibody
Host	Rabbit
Application	WB,IHC,ICC/IF,ICC,FC,IP
Reactivity	Human,Mouse
Conjugation	Unconjugated
Modification	Unmodified
Isotype	IgG
Clonality	Monoclonal
Form	Liquid
Concentration	0.71mg/ml. The concentration of this product may be batch-dependent.
Storage	Aliquot and store at -20°C (valid for 12 months). Avoid freeze/thaw cycles.
Shipping	Ice bags
Buffer	Purified antibody in PBS with 0.05% sodium azide,0.05% protective protein and 50% glycerol.
Purification	Affinity Purification

Application

Dilution Ratio	WB 1:1000-1:2000,IHC 1:100-1:200,ICC/IF 1:50-1:200,ICC 1:50-1:200,FC 1:20-1:100,IP 1:20-1:50
Molecular Weight	55 kDa

Antigen Information

Gene Name	KLC3
Alternative Names	KLC2; KLC2L; KLC3; KLCt; KNS2B;;Kinesin light chain 3
Gene ID	
SwissProt ID	Q6P597
Immunogen	A synthesized peptide derived from human Kinesin light chain 3

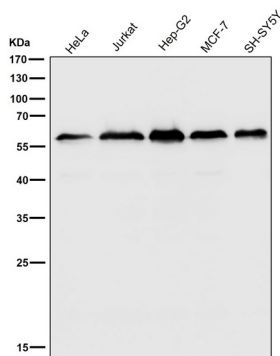
Background

Kinesin is a microtubule-associated force-producing protein that may play a role in organelle transport. Plays a role during

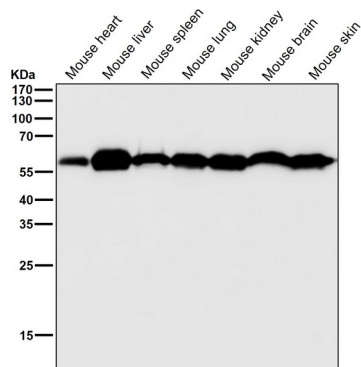
spermiogenesis in the development of the sperm tail midpiece and in the normal function of spermatozoa (By similarity).

Research Area

Image Data



All lanes use the Antibody at 1:2K dilution for 1 hour at room temperature.



All lanes use the Antibody at 1:2K dilution for 1 hour at room temperature.