

---

**Product Name: PLA2G2A Rabbit Monoclonal Antibody****Catalog #: AMRe84470**

For research use only.

**Summary**

<b>Description</b>	Recombinant rabbit monoclonal antibody
<b>Host</b>	Rabbit
<b>Application</b>	WB
<b>Reactivity</b>	Human,Mouse,Rat
<b>Conjugation</b>	Unconjugated
<b>Modification</b>	Unmodified
<b>Isotype</b>	IgG
<b>Clonality</b>	Monoclonal
<b>Form</b>	Liquid
<b>Concentration</b>	0.61mg/ml. The concentration of this product may be batch-dependent.
<b>Storage</b>	Aliquot and store at -20°C (valid for 12 months). Avoid freeze/thaw cycles.
<b>Shipping</b>	Ice bags
<b>Buffer</b>	Purified antibody in PBS with 0.05% sodium azide,0.05% protective protein and 50% glycerol.
<b>Purification</b>	Affinity Purification

**Application**

<b>Dilution Ratio</b>	WB 1:1000-1:2000
<b>Molecular Weight</b>	Calculated MW: 16 kDa ; Observed MW: 14 kDa

**Antigen Information**

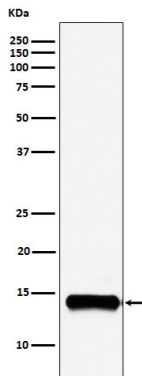
<b>Gene Name</b>	PLA2G2A
<b>Alternative Names</b>	MOM1; PLA2; PLA2B; PLA2L; PLA2S; PLAS1; sPLA2;;PLA2G2A
<b>Gene ID</b>	
<b>SwissProt ID</b>	P14555
<b>Immunogen</b>	A synthesized peptide derived from human PLA2G2A

**Background**

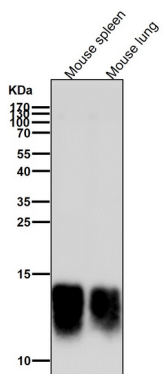
Secretory calcium-dependent phospholipase A2 that primarily targets extracellular phospholipids with implications in host antimicrobial defense, inflammatory response and tissue regeneration.

## Research Area

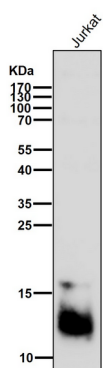
## Image Data



Western blot analysis of PLA2G2A expression in A549 cell lysate.



All lanes use the Antibody at 1:2K dilution for 1 hour at room temperature.



All lanes use the Antibody at 1:2K dilution for 1 hour at room temperature.