

Product Name: BTF Rabbit Monoclonal Antibody**Catalog #: AMRe84469**

For research use only.

Summary

Description	Recombinant rabbit monoclonal antibody
Host	Rabbit
Application	WB,IHC,ICC/IF,ICC
Reactivity	Human,Mouse,Rat
Conjugation	Unconjugated
Modification	Unmodified
Isotype	IgG
Clonality	Monoclonal
Form	Liquid
Concentration	
Storage	Aliquot and store at -20°C (valid for 12 months). Avoid freeze/thaw cycles.
Shipping	Ice bags
Buffer	Purified antibody in PBS with 0.05% sodium azide,0.05% protective protein and 50% glycerol.
Purification	Affinity Purification

Application

Dilution Ratio	WB 1:1000-1:2000,IHC 1:100-1:200,ICC/IF 1:50-1:200,ICC 1:50-1:200
Molecular Weight	Calculated MW: 106 kDa ; Observed MW: 150 kDa

Antigen Information

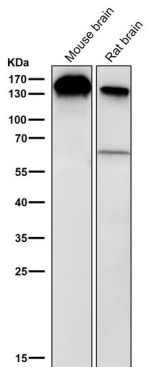
Gene Name	BTF
Alternative Names	BCLAF1; bK211L9.1; Btf;;BTF
Gene ID	
SwissProt ID	Q9NYF8
Immunogen	A synthesized peptide derived from human BTF

Background

Death-promoting transcriptional repressor. May be involved in cyclin-D1/CCND1 mRNA stability through the SNARP complex which associates with both the 3'end of the CCND1 gene and its mRNA.

Research Area

Image Data



All lanes use the Antibody at 1:2K dilution for 1 hour at room temperature.