

---

**Product Name: DCAF13 Rabbit Monoclonal Antibody****Catalog #: AMRe84466**

For research use only.

**Summary**

<b>Description</b>	Recombinant rabbit monoclonal antibody
<b>Host</b>	Rabbit
<b>Application</b>	WB,IHC,IP
<b>Reactivity</b>	Human,Mouse,Rat
<b>Conjugation</b>	Unconjugated
<b>Modification</b>	Unmodified
<b>Isotype</b>	IgG
<b>Clonality</b>	Monoclonal
<b>Form</b>	Liquid
<b>Concentration</b>	0.61mg/ml. The concentration of this product may be batch-dependent.
<b>Storage</b>	Aliquot and store at -20°C (valid for 12 months). Avoid freeze/thaw cycles.
<b>Shipping</b>	Ice bags
<b>Buffer</b>	Purified antibody in PBS with 0.05% sodium azide,0.05% protective protein and 50% glycerol.
<b>Purification</b>	Affinity Purification

**Application**

<b>Dilution Ratio</b>	WB 1:1000-1:2000,IHC 1:100-1:200,IP 1:20-1:50
<b>Molecular Weight</b>	Calculated MW: 51 kDa ; Observed MW: 50 kDa

**Antigen Information**

<b>Gene Name</b>	DCAF13
<b>Alternative Names</b>	DCAF13; DDB1 and CUL4 associated factor 13; GM83; HSPC064; WD repeat and SOF domain-containing protein 1; WDSOF1;;DCAF13
<b>Gene ID</b>	
<b>SwissProt ID</b>	Q9NV06
<b>Immunogen</b>	A synthesized peptide derived from human DCAF13

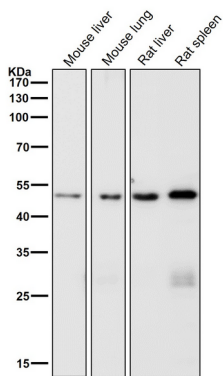
**Background**

Part of the small subunit (SSU) processome, first precursor of the small eukaryotic ribosomal subunit. During the assembly of

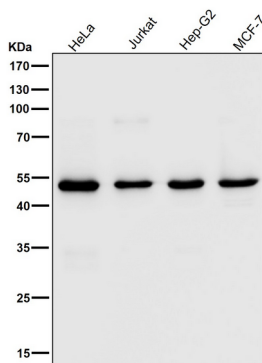
the SSU processome in the nucleolus, many ribosome biogenesis factors, an RNA chaperone and ribosomal proteins associate with the nascent pre-rRNA and work in concert to generate RNA folding, modifications, rearrangements and cleavage as well as targeted degradation of pre-ribosomal RNA by the RNA exosome.

## Research Area

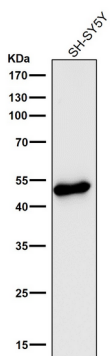
## Image Data



All lanes use the Antibody at 1:2K dilution for 1 hour at room temperature.



All lanes use the Antibody at 1:2K dilution for 1 hour at room temperature.



All lanes use the Antibody at 1:2K dilution for 1 hour at room temperature.