
Product Name: GLB1 Rabbit Monoclonal Antibody**Catalog #: AMRe84453**

For research use only.

Summary

Description	Recombinant rabbit monoclonal antibody
Host	Rabbit
Application	WB,FC
Reactivity	Human,Mouse,Rat
Conjugation	Unconjugated
Modification	Unmodified
Isotype	IgG
Clonality	Monoclonal
Form	Liquid
Concentration	0.61mg/ml. The concentration of this product may be batch-dependent.
Storage	Aliquot and store at -20°C (valid for 12 months). Avoid freeze/thaw cycles.
Shipping	Ice bags
Buffer	Purified antibody in PBS with 0.05% sodium azide,0.05% protective protein and 50% glycerol.
Purification	Affinity Purification

Application

Dilution Ratio	WB 1:1000-1:2000,FC 1:20-1:100
Molecular Weight	Calculated MW: 76 kDa ; Observed MW: 95 kDa

Antigen Information

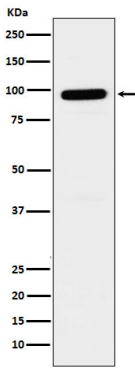
Gene Name	GLB1
Alternative Names	EBP; ELNR1; Galactosidase beta 1; GLB1; Lactase; MPS4B;;beta Galactosidase
Gene ID	
SwissProt ID	P16278
Immunogen	A synthesized peptide derived from human beta Galactosidase

Background

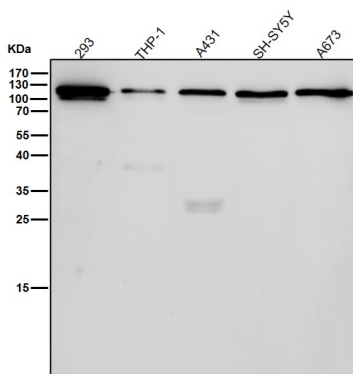
Cleaves beta-linked terminal galactosyl residues from gangliosides, glycoproteins, and glycosaminoglycans.

Research Area

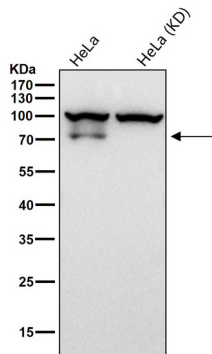
Image Data



Western blot analysis of GLB1 expression in SH-SY5Y cell lysate.



All lanes use the Antibody at 1:2K dilution for 1 hour at room temperature.



All lanes use the Antibody at 1:2K dilution for 1 hour at room temperature.