

Product Name: Laminin gamma 1 Rabbit Monoclonal Antibody**Catalog #: AMRe84452**

For research use only.

Summary

Description	Recombinant rabbit monoclonal antibody
Host	Rabbit
Application	WB,FC
Reactivity	Human
Conjugation	Unconjugated
Modification	Unmodified
Isotype	IgG
Clonality	Monoclonal
Form	Liquid
Concentration	0.71mg/ml. The concentration of this product may be batch-dependent.
Storage	Aliquot and store at -20°C (valid for 12 months). Avoid freeze/thaw cycles.
Shipping	Ice bags
Buffer	Purified antibody in PBS with 0.05% sodium azide,0.05% protective protein and 50% glycerol.
Purification	Affinity Purification

Application

Dilution Ratio	WB 1:1000-1:2000,FC 1:20-1:100
Molecular Weight	Calculated MW: 178 kDa ; Observed MW: 200-280 kDa

Antigen Information

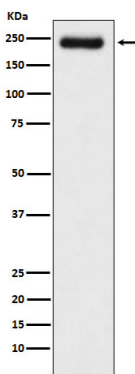
Gene Name	Laminin gamma 1
Alternative Names	LAMB2; lamc1; Laminin B2 chain; Laminin subunit gamma-1; Laminin-1 subunit gamma; Laminin-10 subunit gamma; Laminin-11 subunit gamma; Laminin-2 subunit gamma; Laminin-3 subunit gamma; Laminin-4 subunit gamma; Laminin-6 subunit gamma; Laminin-7 subunit gamma; Laminin-8 subunit gamma; Laminin-9 subunit gamma;;Laminin gamma 1
Gene ID	
SwissProt ID	P11047/Q5VYE7/Q6NVY8
Immunogen	A synthesized peptide derived from human Laminin gamma 1

Background

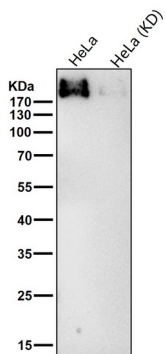
Binding to cells via a high affinity receptor, laminin is thought to mediate the attachment, migration and organization of cells into tissues during embryonic development by interacting with other extracellular matrix components.

Research Area

Image Data



Western blot analysis of Laminin gamma 1 expression in A431 cell lysate.



All lanes use the Antibody at 1:1k dilution for 1 hour at room temperature.