

Product Name: GJB1 Rabbit Monoclonal Antibody**Catalog #: AMRe84447**

For research use only.

Summary

Description	Recombinant rabbit monoclonal antibody
Host	Rabbit
Application	WB,IHC,FC
Reactivity	Human
Conjugation	Unconjugated
Modification	Unmodified
Isotype	IgG
Clonality	Monoclonal
Form	Liquid
Concentration	
Storage	Aliquot and store at -20°C (valid for 12 months). Avoid freeze/thaw cycles.
Shipping	Ice bags
Buffer	Purified antibody in PBS with 0.05% sodium azide,0.05% protective protein and 50% glycerol.
Purification	Affinity Purification

Application

Dilution Ratio	WB 1:1000-1:2000,IHC 1:100-1:200,FC 1:20-1:100
Molecular Weight	32 kDa

Antigen Information

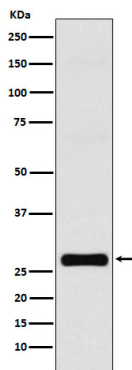
Gene Name	GJB1
Alternative Names	CMTX; CMTX1; Connexin32; Cx32; GJB1;;GJB1
Gene ID	
SwissProt ID	P08034
Immunogen	A synthesized peptide derived from human GJB1

Background

One gap junction consists of a cluster of closely packed pairs of transmembrane channels, the connexons, through which materials of low MW diffuse from one cell to a neighboring cell.

Research Area

Image Data



Western blot analysis of GJB1 expression in MCF-7 cell lysate.