

Product Name: NXF1 Rabbit Monoclonal Antibody**Catalog #: AMRe84445**

For research use only.

Summary

Description	Recombinant rabbit monoclonal antibody
Host	Rabbit
Application	WB,IHC,ICC/IF,ICC,IP
Reactivity	Human
Conjugation	Unconjugated
Modification	Unmodified
Isotype	IgG
Clonality	Monoclonal
Form	Liquid
Concentration	0.71mg/ml. The concentration of this product may be batch-dependent.
Storage	Aliquot and store at -20°C (valid for 12 months). Avoid freeze/thaw cycles.
Shipping	Ice bags
Buffer	Purified antibody in PBS with 0.05% sodium azide,0.05% protective protein and 50% glycerol.
Purification	Affinity Purification

Application

Dilution Ratio	WB 1:1000-1:2000,IHC 1:100-1:200,ICC/IF 1:50-1:200,ICC 1:50-1:200,IP 1:20-1:50
Molecular Weight	70 kDa

Antigen Information

Gene Name	NXF1
Alternative Names	DmNXF1; MEX67; Mex67p; Mvb1; NXF1; Sbr; TAP;;NXF1
Gene ID	
SwissProt ID	Q9UBU9
Immunogen	A synthesized peptide derived from human NXF1

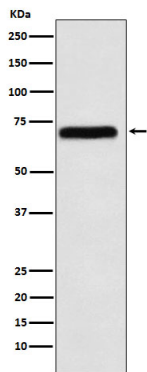
Background

Involved in the nuclear export of mRNA species bearing retroviral constitutive transport elements (CTE) and in the export of mRNA from the nucleus to the cytoplasm. The NXF1-NXT1 heterodimer is involved in the export of HSP70 mRNA in conjunction

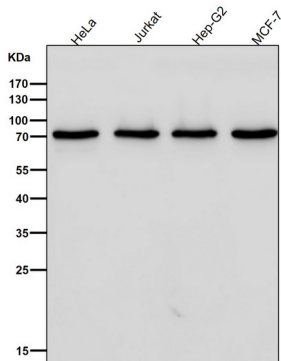
with ALYREF/THOC4 and THOC5 components of the TREX complex.

Research Area

Image Data



Western blot analysis of NXF1 expression in K562 cell lysate.



All lanes use the Antibody at 1:2K dilution for 1 hour at room temperature.