
Product Name: CPS1 Rabbit Monoclonal Antibody**Catalog #: AMRe84432**

For research use only.

Summary

Description	Recombinant rabbit monoclonal antibody
Host	Rabbit
Application	WB,IHC,ICC/IF,ICC,IP
Reactivity	Human,Mouse,Rat
Conjugation	Unconjugated
Modification	Unmodified
Isotype	IgG
Clonality	Monoclonal
Form	Liquid
Concentration	0.71mg/ml. The concentration of this product may be batch-dependent.
Storage	Aliquot and store at -20°C (valid for 12 months). Avoid freeze/thaw cycles.
Shipping	Ice bags
Buffer	Purified antibody in PBS with 0.05% sodium azide,0.05% protective protein and 50% glycerol.
Purification	Affinity Purification

Application

Dilution Ratio	WB 1:1000-1:2000,IHC 1:100-1:200,ICC/IF 1:50-1:200,ICC 1:50-1:200,IP 1:20-1:50
Molecular Weight	Calculated MW: 165 kDa ; Observed MW: 150 kDa

Antigen Information

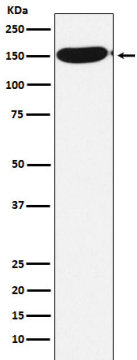
Gene Name	CPS1
Alternative Names	Cps1; CPSase 1; CPSase I; CPSASE1; MS738;;CPS1
Gene ID	
SwissProt ID	P31327
Immunogen	A synthesized peptide derived from human CPS1

Background

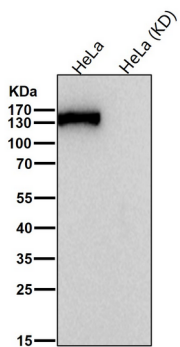
Involved in the urea cycle of ureotelic animals where the enzyme plays an important role in removing excess ammonia from the cell.

Research Area

Image Data



Western blot analysis of CPS1 expression in HeLa cell lysate.



All lanes use the Antibody at 1:1K dilution for 1 hour at room temperature.