

**Product Name: FKBP38 Rabbit Monoclonal Antibody****Catalog #: AMRe84431**

For research use only.

**Summary**

<b>Description</b>	Recombinant rabbit monoclonal antibody
<b>Host</b>	Rabbit
<b>Application</b>	WB,ICC,FC
<b>Reactivity</b>	Human
<b>Conjugation</b>	Unconjugated
<b>Modification</b>	Unmodified
<b>Isotype</b>	IgG
<b>Clonality</b>	Monoclonal
<b>Form</b>	Liquid
<b>Concentration</b>	
<b>Storage</b>	Aliquot and store at -20°C (valid for 12 months). Avoid freeze/thaw cycles.
<b>Shipping</b>	Ice bags
<b>Buffer</b>	Purified antibody in PBS with 0.05% sodium azide, 0.05% protective protein and 50% glycerol.
<b>Purification</b>	Affinity Purification

**Application**

<b>Dilution Ratio</b>	WB 1:1000-1:2000, ICC 1:50-1:200, FC 1:20-1:100
<b>Molecular Weight</b>	Calculated MW: 45 kDa ; Observed MW: 52 kDa

**Antigen Information**

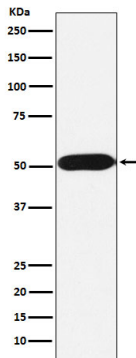
<b>Gene Name</b>	FKBP38
<b>Alternative Names</b>	FKBP 38; Fkbp8; FKBP38; hFKBP38; Rotamase; Sam11;;FKBP8
<b>Gene ID</b>	
<b>SwissProt ID</b>	Q14318
<b>Immunogen</b>	A synthesized peptide derived from human FKBP8

**Background**

Constitutively inactive PPIase, which becomes active when bound to calmodulin and calcium. Seems to act as a chaperone for BCL2, targets it to the mitochondria and modulates its phosphorylation state.

## Research Area

## Image Data



Western blot analysis of FKBP38 expression in Jurkat cell lysate.