
Product Name: Ribophorin I Rabbit Monoclonal Antibody**Catalog #: AMRe84427**

For research use only.

Summary

Description	Recombinant rabbit monoclonal antibody
Host	Rabbit
Application	WB,IHC,ICC/IF,ICC,FC
Reactivity	Human,Rat
Conjugation	Unconjugated
Modification	Unmodified
Isotype	IgG
Clonality	Monoclonal
Form	Liquid
Concentration	0.61mg/ml. The concentration of this product may be batch-dependent.
Storage	Aliquot and store at -20°C (valid for 12 months). Avoid freeze/thaw cycles.
Shipping	Ice bags
Buffer	Purified antibody in PBS with 0.05% sodium azide,0.05% protective protein and 50% glycerol.
Purification	Affinity Purification

Application

Dilution Ratio	WB 1:1000-1:2000,IHC 1:100-1:200,ICC/IF 1:50-1:200,ICC 1:50-1:200,FC 1:20-1:100
Molecular Weight	69 kDa

Antigen Information

Gene Name	Ribophorin I
Alternative Names	OST1; RBPH1; Ribophorin I; Rpn1;;RPN1
Gene ID	
SwissProt ID	P04843
Immunogen	A synthesized peptide derived from human RPN1

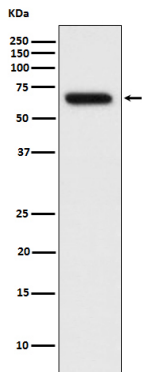
Background

Subunit of the oligosaccharyl transferase (OST) complex that catalyzes the initial transfer of a defined glycan (Glc3Man9GlcNAc2 in eukaryotes) from the lipid carrier dolichol-pyrophosphate to an asparagine residue within an Asn-X-

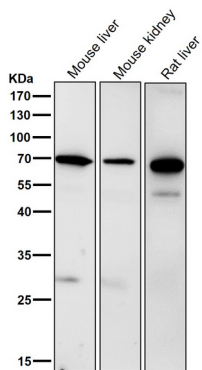
Ser/Thr consensus motif in nascent polypeptide chains, the first step in protein N-glycosylation.

Research Area

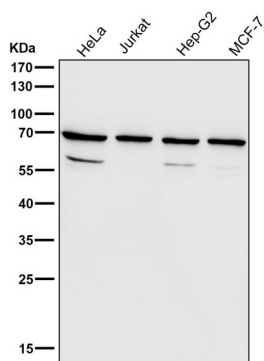
Image Data



Western blot analysis of extracts from Hela cells, using Ribophorin I antibody.



All lanes use the Antibody at 1:2K dilution for 1 hour at room temperature.



All lanes use the Antibody at 1:2K dilution for 1 hour at room temperature.