

---

**Product Name: TAF1 Rabbit Monoclonal Antibody****Catalog #: AMRe84416**

For research use only.

**Summary**

<b>Description</b>	Recombinant rabbit monoclonal antibody
<b>Host</b>	Rabbit
<b>Application</b>	WB
<b>Reactivity</b>	Human, Mouse, Rat
<b>Conjugation</b>	Unconjugated
<b>Modification</b>	Unmodified
<b>Isotype</b>	IgG
<b>Clonality</b>	Monoclonal
<b>Form</b>	Liquid
<b>Concentration</b>	
<b>Storage</b>	Aliquot and store at -20°C (valid for 12 months). Avoid freeze/thaw cycles.
<b>Shipping</b>	Ice bags
<b>Buffer</b>	Purified antibody in PBS with 0.05% sodium azide, 0.05% protective protein and 50% glycerol.
<b>Purification</b>	Affinity Purification

**Application**

<b>Dilution Ratio</b>	WB 1:1000-1:2000
<b>Molecular Weight</b>	Calculated MW: 213 kDa ; Observed MW: 300 kDa

**Antigen Information**

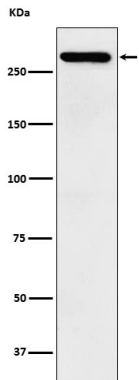
<b>Gene Name</b>	TAF1
<b>Alternative Names</b>	BA2R; CCG1; CCGS; DYT3; N TAF1; NSCL2; p250; TAF1; TAF2A; TAFII250; XDP;;TAF1
<b>Gene ID</b>	
<b>SwissProt ID</b>	P21675
<b>Immunogen</b>	A synthesized peptide derived from human TAF1

**Background**

Largest component and core scaffold of the TFIID basal transcription factor complex. Contains novel N- and C-terminal Ser/Thr kinase domains which can autophosphorylate or transphosphorylate other transcription factors.

## Research Area

## Image Data



Western blot analysis of TAF1 expression in SH-SY5Y cell lysate.