
Product Name: CLPP Rabbit Monoclonal Antibody**Catalog #: AMRe84414**

For research use only.

Summary

Description	Recombinant rabbit monoclonal antibody
Host	Rabbit
Application	WB,IHC,IP
Reactivity	Human,Mouse,Rat
Conjugation	Unconjugated
Modification	Unmodified
Isotype	IgG
Clonality	Monoclonal
Form	Liquid
Concentration	0.71mg/ml. The concentration of this product may be batch-dependent.
Storage	Aliquot and store at -20°C (valid for 12 months). Avoid freeze/thaw cycles.
Shipping	Ice bags
Buffer	Purified antibody in PBS with 0.05% sodium azide,0.05% protective protein and 50% glycerol.
Purification	Affinity Purification

Application

Dilution Ratio	WB 1:1000-1:2000,IHC 1:100-1:200,IP 1:20-1:50
Molecular Weight	Calculated MW: 30 kDa ; Observed MW: 26 kDa

Antigen Information

Gene Name	CLPP
Alternative Names	Endopeptidase Clp;;CLPP
Gene ID	
SwissProt ID	Q16740
Immunogen	A synthesized peptide derived from human CLPP

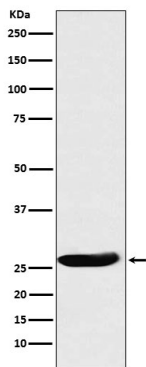
Background

Protease component of the Clp complex that cleaves peptides and various proteins in an ATP-dependent process. Has low peptidase activity in the absence of CLPX. The Clp complex can degrade CSN1S1, CSN2 and CSN3, as well as synthetic peptides

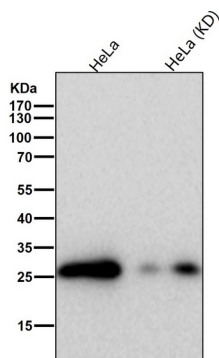
(in vitro) and may be responsible for a fairly general and central housekeeping function rather than for the degradation of specific substrates.

Research Area

Image Data



Western blot analysis of CLPP expression in A431 cell lysate.



All lanes use the Antibody at 1:1K dilution for 1 hour at room temperature.