

---

**Product Name: Monoamine Oxidase A Rabbit Monoclonal Antibody****Catalog #: AMRe84412**

For research use only.

**Summary**

<b>Description</b>	Recombinant rabbit monoclonal antibody
<b>Host</b>	Rabbit
<b>Application</b>	WB,IHC,ICC/IF,ICC,FC
<b>Reactivity</b>	Human,Mouse,Rat
<b>Conjugation</b>	Unconjugated
<b>Modification</b>	Unmodified
<b>Isotype</b>	IgG
<b>Clonality</b>	Monoclonal
<b>Form</b>	Liquid
<b>Concentration</b>	0.39mg/ml. The concentration of this product may be batch-dependent.
<b>Storage</b>	Aliquot and store at -20°C (valid for 12 months). Avoid freeze/thaw cycles.
<b>Shipping</b>	Ice bags
<b>Buffer</b>	Purified antibody in PBS with 0.05% sodium azide,0.05% protective protein and 50% glycerol.
<b>Purification</b>	Affinity Purification

**Application**

<b>Dilution Ratio</b>	WB 1:1000-1:2000,IHC 1:100-1:200,ICC/IF 1:50-1:200,ICC 1:50-1:200,FC 1:20-1:100
<b>Molecular Weight</b>	60 kDa

**Antigen Information**

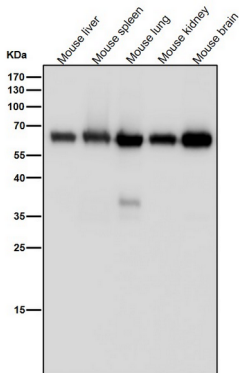
<b>Gene Name</b>	Monoamine Oxidase A
<b>Alternative Names</b>	AOFA; maoA;;MAOA
<b>Gene ID</b>	
<b>SwissProt ID</b>	P21397
<b>Immunogen</b>	A synthesized peptide derived from human MAOA

**Background**

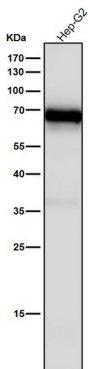
Catalyzes the oxidative deamination of biogenic and xenobiotic amines and has important functions in the metabolism of neuroactive and vasoactive amines in the central nervous system and peripheral tissues.

## Research Area

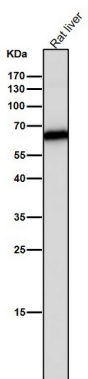
## Image Data



All lanes use the Antibody at 1:2K dilution for 1 hour at room temperature.

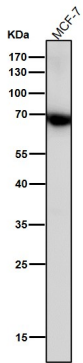


All lanes use the Antibody at 1:2K dilution for 1 hour at room temperature.



All lanes use the Antibody at 1:2K dilution for 1 hour at room temperature.

All lanes use the Antibody at 1:2K dilution for 1 hour at room temperature.



Western blot analysis of Monoamine Oxidase A expression in HepG2 cell lysate.

