
Product Name: PIM2 Rabbit Monoclonal Antibody**Catalog #: AMRe84410**

For research use only.

Summary

Description	Recombinant rabbit monoclonal antibody
Host	Rabbit
Application	WB,ICC,IP
Reactivity	Human,Mouse,Rat
Conjugation	Unconjugated
Modification	Unmodified
Isotype	IgG
Clonality	Monoclonal
Form	Liquid
Concentration	
Storage	Aliquot and store at -20°C (valid for 12 months). Avoid freeze/thaw cycles.
Shipping	Ice bags
Buffer	Purified antibody in PBS with 0.05% sodium azide,0.05% protective protein and 50% glycerol.
Purification	Affinity Purification

Application

Dilution Ratio	WB 1:1000-1:2000,ICC 1:50-1:200,IP 1:20-1:50
Molecular Weight	Calculated MW: 34 kDa ; Observed MW: 37 kDa

Antigen Information

Gene Name	PIM2
Alternative Names	PIM2; Pim2h;;PIM2
Gene ID	
SwissProt ID	Q9P1W9
Immunogen	A synthesized peptide derived from human PIM2

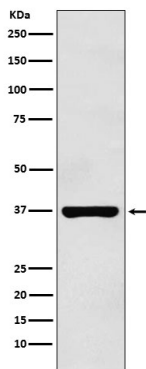
Background

Proto-oncogene with serine/threonine kinase activity involved in cell survival and cell proliferation. Exerts its oncogenic activity through: the regulation of MYC transcriptional activity, the regulation of cell cycle progression, the regulation of cap-

dependent protein translation and through survival signaling by phosphorylation of a pro-apoptotic protein, BAD. Phosphorylation of MYC leads to an increase of MYC protein stability and thereby an increase transcriptional activity.

Research Area

Image Data



Western blot analysis of PIM2 expression in Raji cell lysate.