
Product Name: MADCAM1 Rabbit Monoclonal Antibody**Catalog #: AMRe84407**

For research use only.

Summary

Description	Recombinant rabbit monoclonal antibody
Host	Rabbit
Application	WB
Reactivity	Human
Conjugation	Unconjugated
Modification	Unmodified
Isotype	IgG
Clonality	Monoclonal
Form	Liquid
Concentration	
Storage	Aliquot and store at -20°C (valid for 12 months). Avoid freeze/thaw cycles.
Shipping	Ice bags
Buffer	Purified antibody in PBS with 0.05% sodium azide, 0.05% protective protein and 50% glycerol.
Purification	Affinity Purification

Application

Dilution Ratio	WB 1:1000-1:2000
Molecular Weight	Calculated MW: 40 kDa ; Observed MW: 60 kDa

Antigen Information

Gene Name	MADCAM1
Alternative Names	MACAM1; Madcam1;;MADCAM1
Gene ID	
SwissProt ID	Q13477
Immunogen	A synthesized peptide derived from human MADCAM1

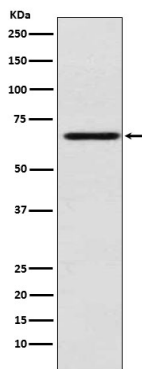
Background

Cell adhesion leukocyte receptor expressed by mucosal venules, helps to direct lymphocyte traffic into mucosal tissues including the Peyer patches and the intestinal lamina propria. It can bind both integrin alpha-4/beta-7 and L-selectin,

regulating both the passage and retention of leukocytes. Isoform 2, lacking the mucin-like domain, may be specialized in supporting integrin alpha-4/beta-7-dependent adhesion strengthening, independent of L-selectin binding.

Research Area

Image Data



Western blot analysis of MADCAM1 expression in HUVEC cell lysate.