

Product Name: GPCR/LGR6 Rabbit Monoclonal Antibody
Catalog #: AMRe84401

Summary

Production Name	GPCR/LGR6 Rabbit Monoclonal Antibody
Description	Rabbit Monoclonal antibody
Host	Rabbit
Application	WB,IHC,ICC,FC,IF
Reactivity	Human,Mouse,Rat

Performance

Conjugation	Unconjugated
Modification	Unmodified
Isotype	IgG
Clonality	Monoclonal
Form	Liquid
Storage	Store at 4°C short term. Aliquot and store at -20°C long term. Avoid freeze/thaw cycles.
Buffer	Purified antibody in PBS with 0.05% sodium azide,0.05% protective protein and 50% glycerol.
Purification	Affinity Purification

Immunogen

Gene Name	GPCR/LGR6
Alternative Names	GPCR; Lgr6;;LGR6
Gene ID	
SwissProt ID	Q9HBX8.A synthesized peptide derived from human LGR6

Application

Dilution Ratio	WB:1:1000-1:2000,IHC:1:100-1:200;IF:1:50-1:200,ICC:1:50-1:200,FC:1:20-1:100
Molecular Weight	104 kDa

Background

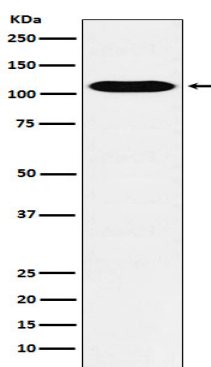
Product Name: GPCR/LGR6 Rabbit Monoclonal Antibody
Catalog #: AMRe84401



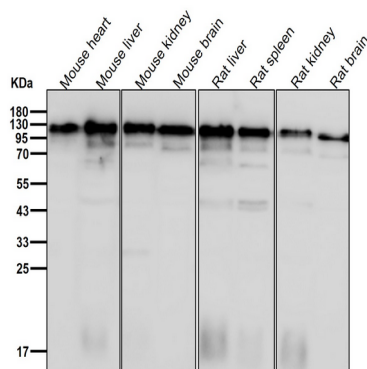
Receptor for R-spondins that potentiates the canonical Wnt signaling pathway and acts as a marker of multipotent stem cells in the epidermis. Upon binding to R-spondins (RSPO1, RSPO2, RSPO3 or RSPO4), associates with phosphorylated LRP6 and frizzled receptors that are activated by extracellular Wnt receptors, triggering the canonical Wnt signaling pathway to increase expression of target genes. In contrast to classical G-protein coupled receptors, does not activate heterotrimeric G-proteins to transduce the signal. May act as a tumor suppressor.

Research Area

Image Data

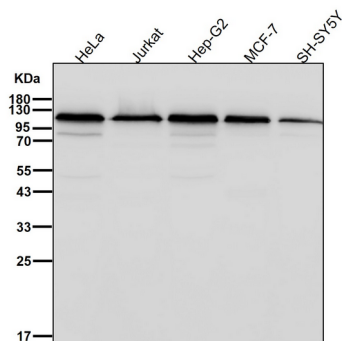


Western blot analysis of GPCR / LGR6 expression in HUVEC cell lysate.



All lanes use the Antibody at 1:1K dilution for 1 hour at room temperature.

Product Name: GPCR/LGR6 Rabbit Monoclonal Antibody
Catalog #: AMRe84401



All lanes use the Antibody at 1:1K dilution for 1 hour at room temperature.

Note

For research use only.