

---

**Product Name: c-Maf Rabbit Monoclonal Antibody****Catalog #: AMRe84396**

For research use only.

**Summary**

|                      |   |
|----------------------|---|
| <b>Description</b>   | Recombinant rabbit monoclonal antibody  |
| <b>Host</b>          | Rabbit  |
| <b>Application</b>   | WB  |
| <b>Reactivity</b>    | Human,Mouse,Rat   |
| <b>Conjugation</b>   | Unconjugated  |
| <b>Modification</b>  | Unmodified  |
| <b>Isotype</b>       | IgG   |
| <b>Clonality</b>     | Monoclonal  |
| <b>Form</b>          | Liquid  |
| <b>Concentration</b> | 0.39mg/ml. The concentration of this product may be batch-dependent.                        |
| <b>Storage</b>       | Aliquot and store at -20°C (valid for 12 months). Avoid freeze/thaw cycles.                 |
| <b>Shipping</b>      | Ice bags  |
| <b>Buffer</b>        | Purified antibody in PBS with 0.05% sodium azide,0.05% protective protein and 50% glycerol. |
| <b>Purification</b>  | Affinity Purification   |

**Application**

|                         |   |
|-------------------------|---|
| <b>Dilution Ratio</b>   | WB 1:1000-1:2000                            |
| <b>Molecular Weight</b> | Calculated MW: 38 kDa ; Observed MW: 44 kDa |

**Antigen Information**

|                          |  |
|--------------------------|--|
| <b>Gene Name</b>         | c-Maf  |
| <b>Alternative Names</b> | cMaf; maf; MAF2; Proto oncogene c Maf;;c Maf   |
| <b>Gene ID</b>           |  |
| <b>SwissProt ID</b>      | O75444   |
| <b>Immunogen</b>         | A synthesized peptide derived from human c Maf |

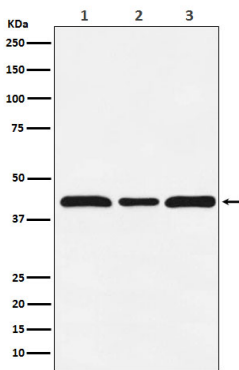
**Background**

Acts as a transcriptional activator or repressor. Involved in embryonic lens fiber cell development. Recruits the transcriptional coactivators CREBBP and/or EP300 to crystallin promoters leading to up-regulation of crystallin gene during lens fiber cell

differentiation.

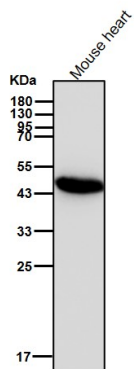
## Research Area

## Image Data

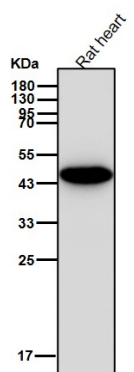


Western blot analysis of c-Maf expression in (1) HUVEC cell lysate; (2) NIH/3T3 cell lysate; (3) PC12 cell lysate.

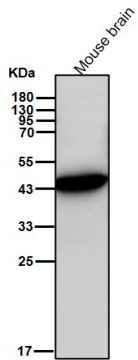
All lanes use the Antibody at 1:2K dilution for 1 hour at room temperature.



All lanes use the Antibody at 1:2K dilution for 1 hour at room temperature.



All lanes use the Antibody at 1:2K dilution for 1 hour at room temperature.



All lanes use the Antibody at 1:2K dilution for 1 hour at room temperature.

