
Product Name: Glutathione Synthetase Rabbit Monoclonal Antibody**Catalog #: AMRe84394**

For research use only.

Summary

Description	Recombinant rabbit monoclonal antibody
Host	Rabbit
Application	WB,IHC,ICC/IF,ICC,FC
Reactivity	Human,Mouse,Rat
Conjugation	Unconjugated
Modification	Unmodified
Isotype	IgG
Clonality	Monoclonal
Form	Liquid
Concentration	0.61mg/ml. The concentration of this product may be batch-dependent.
Storage	Aliquot and store at -20°C (valid for 12 months). Avoid freeze/thaw cycles.
Shipping	Ice bags
Buffer	Purified antibody in PBS with 0.05% sodium azide,0.05% protective protein and 50% glycerol.
Purification	Affinity Purification

Application

Dilution Ratio	WB 1:1000-1:2000,IHC 1:100-1:200,ICC/IF 1:50-1:200,ICC 1:50-1:200,FC 1:20-1:100
Molecular Weight	52 kDa

Antigen Information

Gene Name	Glutathione Synthetase
Alternative Names	Glutathione synthase; Glutathione synthetase; GSH S; GSH synthetase; GSH-S; GSHS; GSS; HEL-S-64p; HEL-S-88n;;GSS
Gene ID	
SwissProt ID	P48637
Immunogen	A synthesized peptide derived from human GSS

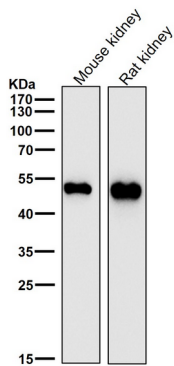
Background

Catalyzes the production of glutathione from gamma-glutamylcysteine and glycine in an ATP-dependent manner.Glutathione

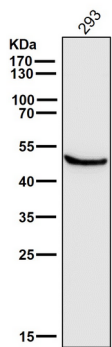
(gamma-glutamylcysteinylglycine, GSH) is the most abundant intracellular thiol in living aerobic cells and is required for numerous processes including the protection of cells against oxidative damage, amino acid transport, the detoxification of foreign compounds, the maintenance of protein sulfhydryl groups in a reduced state and acts as a cofactor for a number of enzymes.

Research Area

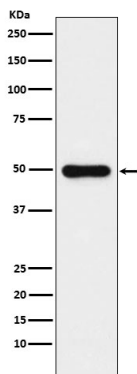
Image Data



All lanes use the Antibody at 1:2K dilution for 1 hour at room temperature.



All lanes use the Antibody at 1:2K dilution for 1 hour at room temperature.



Western blot analysis of Glutathione Synthetase expression in HeLa cell lysate.