
Product Name: TMEFF2 Rabbit Monoclonal Antibody**Catalog #: AMRe84389**

For research use only.

Summary

Description	Recombinant rabbit monoclonal antibody
Host	Rabbit
Application	WB,IHC,ICC/IF,ICC,FC
Reactivity	Human
Conjugation	Unconjugated
Modification	Unmodified
Isotype	IgG
Clonality	Monoclonal
Form	Liquid
Concentration	
Storage	Aliquot and store at -20°C (valid for 12 months). Avoid freeze/thaw cycles.
Shipping	Ice bags
Buffer	Purified antibody in PBS with 0.05% sodium azide,0.05% protective protein and 50% glycerol.
Purification	Affinity Purification

Application

Dilution Ratio	WB 1:1000-1:2000,IHC 1:100-1:200,ICC/IF 1:50-1:200,ICC 1:50-1:200,FC 1:20-1:100
Molecular Weight	41 kDa

Antigen Information

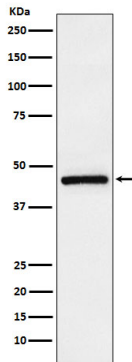
Gene Name	TMEFF2
Alternative Names	TMEFF2; HPP1; TPEF; TR-2; Tomoregulin; TENB2; Tomoregulin-2; CT120.2;;TR 2
Gene ID	
SwissProt ID	Q9UIK5
Immunogen	A synthesized peptide derived from human TR 2

Background

May be a survival factor for hippocampal and mesencephalic neurons. The shedded form up-regulates cancer cell proliferation, probably by promoting ERK1/2 phosphorylation.

Research Area

Image Data



Western blot analysis of TMEFF2 expression in LnCaP cell lysate.