

Product Name: CCL21 Rabbit Monoclonal Antibody
Catalog #: AMRe84382



Summary

| | |
|------------------------|----------------------------------|
| Production Name | CCL21 Rabbit Monoclonal Antibody |
| Description | Rabbit Monoclonal antibody |
| Host | Rabbit |
| Application | WB |
| Reactivity | Human |

Performance

| | |
|---------------------|--|
| Conjugation | Unconjugated |
| Modification | Unmodified |
| Isotype | IgG |
| Clonality | Monoclonal |
| Form | Liquid |
| Storage | Store at 4°C short term. Aliquot and store at -20°C long term. Avoid freeze/thaw cycles. |
| Buffer | Purified antibody in PBS with 0.05% sodium azide, 0.05% protective protein and 50% glycerol. |
| Purification | Affinity Purification |

Immunogen

| | |
|--------------------------|--|
| Gene Name | CCL21 |
| Alternative Names | ECL; SLC; CKb9; TCA4; 6Ckine; SCYA21;;CCL21 |
| Gene ID | |
| SwissProt ID | O00585. A synthesized peptide derived from human CCL21 |

Application

| | |
|-------------------------|------------------|
| Dilution Ratio | WB:1:1000-1:2000 |
| Molecular Weight | 15 kDa |

Background

Inhibits hemopoiesis and stimulates chemotaxis. Chemotactic in vitro for thymocytes and activated T-cells, but not for B-

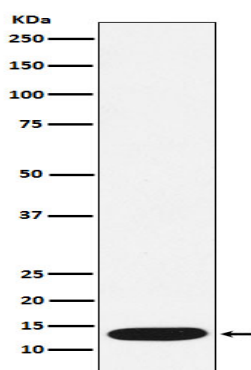
Product Name: CCL21 Rabbit Monoclonal Antibody
Catalog #: AMRe84382



cells, macrophages, or neutrophils. Shows preferential activity towards naive T-cells.

Research Area

Image Data



Western blot analysis of CCL21 expression in Human CCL21 recombinant protein lysate.

Note

For research use only.