

Product Name: RCC1 Rabbit Monoclonal Antibody**Catalog #: AMRe84375**

For research use only.

Summary

Description	Recombinant rabbit monoclonal antibody
Host	Rabbit
Application	WB,IHC,ICC/IF,ICC,FC,IP
Reactivity	Human,Mouse,Rat
Conjugation	Unconjugated
Modification	Unmodified
Isotype	IgG
Clonality	Monoclonal
Form	Liquid
Concentration	
Storage	Aliquot and store at -20°C (valid for 12 months). Avoid freeze/thaw cycles.
Shipping	Ice bags
Buffer	Purified antibody in PBS with 0.05% sodium azide,0.05% protective protein and 50% glycerol.
Purification	Affinity Purification

Application

Dilution Ratio	WB 1:1000-1:2000,IHC 1:100-1:200,ICC/IF 1:50-1:200,ICC 1:50-1:200,FC 1:20-1:100,IP 1:20-1:50
Molecular Weight	45 kDa

Antigen Information

Gene Name	RCC1
Alternative Names	RCC1; RCC1-I; SNHG3-RCC1; CHC1;;RCC1
Gene ID	
SwissProt ID	P18754
Immunogen	A synthesized peptide derived from human RCC1

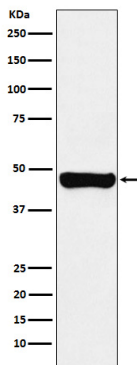
Background

Guanine-nucleotide releasing factor that promotes the exchange of Ran-bound GDP by GTP, and thereby plays an important

role in RAN-mediated functions in nuclear import and mitosis.

Research Area

Image Data



Western blot analysis of RCC1 expression in A431 cell lysate.