

Product Name: PMP70 Rabbit Monoclonal Antibody**Catalog #: AMRe84370**

For research use only.

Summary

| | |
|----------------------|---------------------------------------------------------------------------------------------|
| Description | Recombinant rabbit monoclonal antibody |
| Host | Rabbit |
| Application | WB,ICC,FC |
| Reactivity | Human,Mouse,Rat |
| Conjugation | Unconjugated |
| Modification | Unmodified |
| Isotype | IgG |
| Clonality | Monoclonal |
| Form | Liquid |
| Concentration | 0.61mg/ml. The concentration of this product may be batch-dependent. |
| Storage | Aliquot and store at -20°C (valid for 12 months). Avoid freeze/thaw cycles. |
| Shipping | Ice bags |
| Buffer | Purified antibody in PBS with 0.05% sodium azide,0.05% protective protein and 50% glycerol. |
| Purification | Affinity Purification |

Application

| | |
|-------------------------|-----------------------------------------------|
| Dilution Ratio | WB 1:1000-1:2000,ICC 1:50-1:200,FC 1:20-1:100 |
| Molecular Weight | Calculated MW: 75 kDa ; Observed MW: 70 kDa |

Antigen Information

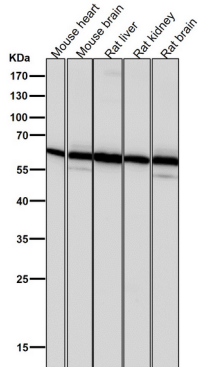
| | |
|--------------------------|------------------------------------------------|
| Gene Name | PMP70 |
| Alternative Names | ABCD3; ABC43; PMP70; PXMP1; ZWS2;;ABCD3 |
| Gene ID | |
| SwissProt ID | P28288 |
| Immunogen | A synthesized peptide derived from human ABCD3 |

Background

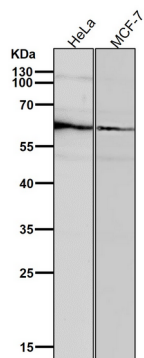
Probable transporter. The nucleotide-binding fold acts as an ATP-binding subunit with ATPase activity.

Research Area

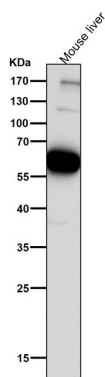
Image Data



All lanes use the Antibody at 1:2K dilution for 1 hour at room temperature.



All lanes use the Antibody at 1:2K dilution for 1 hour at room temperature.



All lanes use the Antibody at 1:2K dilution for 1 hour at room temperature.