
Product Name: Phospho-PKC delta(Y311) Rabbit Monoclonal Antibody**Catalog #: AMRe84366**

For research use only.

Summary

Description	Recombinant rabbit monoclonal antibody
Host	Rabbit
Application	WB,IHC,IP
Reactivity	Human
Conjugation	Unconjugated
Modification	Phosphorylated
Isotype	IgG
Clonality	Monoclonal
Form	Liquid
Concentration	0.5mg/ml. The concentration of this product may be batch-dependent.
Storage	Aliquot and store at -20°C (valid for 12 months). Avoid freeze/thaw cycles.
Shipping	Ice bags
Buffer	Purified antibody in PBS with 0.05% sodium azide,0.05% protective protein and 50% glycerol.
Purification	Affinity Purification

Application

Dilution Ratio	WB 1:1000-1:2000,IHC 1:100-1:200,IP 1:20-1:50
Molecular Weight	Calculated MW: 78 kDa ; Observed MW: 77 kDa

Antigen Information

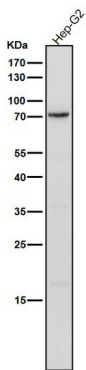
Gene Name	Phospho-PKC delta(Y311) CVID9; Kinase PKC delta; KPCD; MAY1; nPKC delta; PCKd; PKC delta; PKCD; PKCdelta; PRKC
Alternative Names	delta; Prkcd; Protein Kinase C delta; Protein kinase C delta VIII; Protein Kinase Cdelta; Tyrosine protein kinase PRKCD;;p-PKC delta (Y313)
Gene ID	
SwissProt ID	Q05655
Immunogen	A synthesized peptide derived from human PKC delta around the phosphorylation site of Y313

Background

Calcium-independent, phospholipid- and diacylglycerol (DAG)-dependent serine/threonine-protein kinase that plays contrasting roles in cell death and cell survival by functioning as a pro-apoptotic protein during DNA damage-induced apoptosis, but acting as an anti-apoptotic protein during cytokine receptor-initiated cell death, is involved in tumor suppression as well as survival of several cancers, is required for oxygen radical production by NADPH oxidase and acts as positive or negative regulator in platelet functional responses.

Research Area

Image Data



All lanes use the Antibody at 1:1K dilution for 1 hour at room temperature.