

---

**Product Name: MCM4 Rabbit Monoclonal Antibody****Catalog #: AMRe84358**

For research use only.

**Summary**

<b>Description</b>	Recombinant rabbit monoclonal antibody
<b>Host</b>	Rabbit
<b>Application</b>	WB,FC,IP
<b>Reactivity</b>	Human,Mouse
<b>Conjugation</b>	Unconjugated
<b>Modification</b>	Unmodified
<b>Isotype</b>	IgG
<b>Clonality</b>	Monoclonal
<b>Form</b>	Liquid
<b>Concentration</b>	
<b>Storage</b>	Aliquot and store at -20°C (valid for 12 months). Avoid freeze/thaw cycles.
<b>Shipping</b>	Ice bags
<b>Buffer</b>	Purified antibody in PBS with 0.05% sodium azide,0.05% protective protein and 50% glycerol.
<b>Purification</b>	Affinity Purification

**Application**

<b>Dilution Ratio</b>	WB 1:1000-1:2000,FC 1:20-1:100,IP 1:20-1:50
<b>Molecular Weight</b>	97 kDa

**Antigen Information**

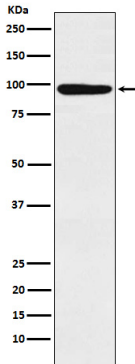
<b>Gene Name</b>	MCM4
<b>Alternative Names</b>	CDC21; CDC54; hCdc21; P1-CDC21;;MCM4
<b>Gene ID</b>	
<b>SwissProt ID</b>	P33991
<b>Immunogen</b>	A synthesized peptide derived from human MCM4

**Background**

Acts as component of the MCM2-7 complex (MCM complex) which is the putative replicative helicase essential for 'once per cell cycle' DNA replication initiation and elongation in eukaryotic cells.

## Research Area

## Image Data



Western blot analysis of MCM4 expression in Molt-4 cell lysate.