
Product Name: Cathepsin S Rabbit Monoclonal Antibody**Catalog #: AMRe84355**

For research use only.

Summary

| | |
|----------------------|---|
| Description | Recombinant rabbit monoclonal antibody |
| Host | Rabbit |
| Application | WB,IHC,ICC/IF,ICC |
| Reactivity | Human |
| Conjugation | Unconjugated |
| Modification | Unmodified |
| Isotype | IgG |
| Clonality | Monoclonal |
| Form | Liquid |
| Concentration | |
| Storage | Aliquot and store at -20°C (valid for 12 months). Avoid freeze/thaw cycles. |
| Shipping | Ice bags |
| Buffer | Purified antibody in PBS with 0.05% sodium azide,0.05% protective protein and 50% glycerol. |
| Purification | Affinity Purification |

Application

| | |
|-------------------------|---|
| Dilution Ratio | WB 1:1000-1:2000,IHC 1:100-1:200,ICC/IF 1:50-1:200,ICC 1:50-1:200 |
| Molecular Weight | Calculated MW: 37 kDa ; Observed MW: 25 kDa |

Antigen Information

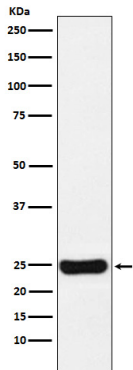
| | |
|--------------------------|--|
| Gene Name | Cathepsin S |
| Alternative Names | CTSS; Cathepsin S; Cat-s; CATS;;Cathepsin S |
| Gene ID | |
| SwissProt ID | P25774 |
| Immunogen | A synthesized peptide derived from human Cathepsin S |

Background

Thiol protease. Key protease responsible for the removal of the invariant chain from MHC class II molecules. The bond-specificity of this proteinase is in part similar to the specificities of cathepsin L and cathepsin N.

Research Area

Image Data



Western blot analysis of Cathepsin S expression in U87-MG cell lysate.