

---

**Product Name: NUDEL Rabbit Monoclonal Antibody****Catalog #: AMRe84353**

For research use only.

**Summary**

<b>Description</b>	Recombinant rabbit monoclonal antibody
<b>Host</b>	Rabbit
<b>Application</b>	WB,IHC
<b>Reactivity</b>	Human,Mouse,Rat
<b>Conjugation</b>	Unconjugated
<b>Modification</b>	Unmodified
<b>Isotype</b>	IgG
<b>Clonality</b>	Monoclonal
<b>Form</b>	Liquid
<b>Concentration</b>	0.61mg/ml. The concentration of this product may be batch-dependent.
<b>Storage</b>	Aliquot and store at -20°C (valid for 12 months). Avoid freeze/thaw cycles.
<b>Shipping</b>	Ice bags
<b>Buffer</b>	Purified antibody in PBS with 0.05% sodium azide,0.05% protective protein and 50% glycerol.
<b>Purification</b>	Affinity Purification

**Application**

<b>Dilution Ratio</b>	WB 1:1000-1:2000,IHC 1:100-1:200
<b>Molecular Weight</b>	Calculated MW: 38 kDa ; Observed MW: 40 kDa

**Antigen Information**

<b>Gene Name</b>	NUDEL
<b>Alternative Names</b>	EOPA; MITAP1; NDEL1; NUDEL;;NUDEL
<b>Gene ID</b>	
<b>SwissProt ID</b>	Q9GZM8
<b>Immunogen</b>	A synthesized peptide derived from human NUDEL

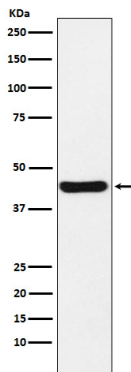
**Background**

Required for organization of the cellular microtubule array and microtubule anchoring at the centrosome. May regulate microtubule organization at least in part by targeting the microtubule severing protein KATNA1 to the centrosome. Also

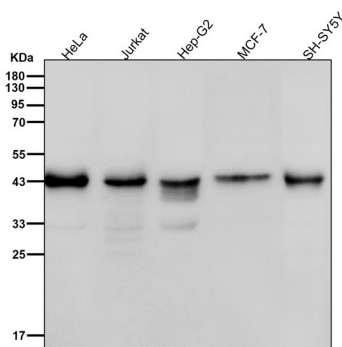
positively regulates the activity of the minus-end directed microtubule motor protein dynein. May enhance dynein-mediated microtubule sliding by targeting dynein to the microtubule plus ends.

## Research Area

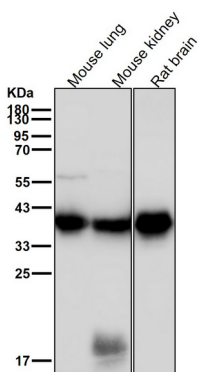
## Image Data



Western blot analysis of NUDEL expression in HeLa cell lysate.



All lanes use the Antibody at 1:2K dilution for 1 hour at room temperature.



All lanes use the Antibody at 1:2K dilution for 1 hour at room temperature.