
Product Name: FRA2 Rabbit Monoclonal Antibody**Catalog #: AMRe84344**

For research use only.

Summary

| | |
|----------------------|---|
| Description | Recombinant rabbit monoclonal antibody |
| Host | Rabbit |
| Application | WB,FC,IP |
| Reactivity | Human,Mouse,Rat |
| Conjugation | Unconjugated |
| Modification | Unmodified |
| Isotype | IgG |
| Clonality | Monoclonal |
| Form | Liquid |
| Concentration | 0.71mg/ml. The concentration of this product may be batch-dependent. |
| Storage | Aliquot and store at -20°C (valid for 12 months). Avoid freeze/thaw cycles. |
| Shipping | Ice bags |
| Buffer | Purified antibody in PBS with 0.05% sodium azide,0.05% protective protein and 50% glycerol. |
| Purification | Affinity Purification |

Application

| | |
|-------------------------|---|
| Dilution Ratio | WB 1:1000-1:2000,FC 1:20-1:100,IP 1:20-1:50 |
| Molecular Weight | Calculated MW: 35 kDa ; Observed MW: 45 kDa |

Antigen Information

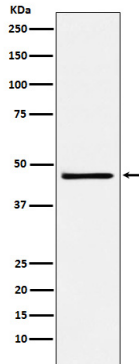
| | |
|--------------------------|---|
| Gene Name | FRA2 |
| Alternative Names | Fos L2; FosL2; FRA 2;;FRA2 |
| Gene ID | |
| SwissProt ID | P15408 |
| Immunogen | A synthesized peptide derived from human FRA2 |

Background

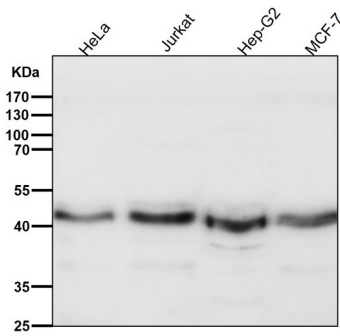
Controls osteoclast survival and size. As a dimer with JUN, activates LIF transcription. Activates CEBPB transcription in PGE2-activated osteoblasts.

Research Area

Image Data



Western blot analysis of FRA2 expression in NCCIT cell lysate.



All lanes use the Antibody at 1:2K dilution for 1 hour at room temperature.