

**Product Name: NR2E1 Rabbit Monoclonal Antibody****Catalog #: AMRe84334**

For research use only.

**Summary**

|                      |   |
|----------------------|---|
| <b>Description</b>   | Recombinant rabbit monoclonal antibody  |
| <b>Host</b>          | Rabbit  |
| <b>Application</b>   | WB  |
| <b>Reactivity</b>    | Human,Mouse,Rat   |
| <b>Conjugation</b>   | Unconjugated  |
| <b>Modification</b>  | Unmodified  |
| <b>Isotype</b>       | IgG   |
| <b>Clonality</b>     | Monoclonal  |
| <b>Form</b>          | Liquid  |
| <b>Concentration</b> | 0.61mg/ml. The concentration of this product may be batch-dependent.                        |
| <b>Storage</b>       | Aliquot and store at -20°C (valid for 12 months). Avoid freeze/thaw cycles.                 |
| <b>Shipping</b>      | Ice bags  |
| <b>Buffer</b>        | Purified antibody in PBS with 0.05% sodium azide,0.05% protective protein and 50% glycerol. |
| <b>Purification</b>  | Affinity Purification   |

**Application**

|                         |   |
|-------------------------|---|
| <b>Dilution Ratio</b>   | WB 1:1000-1:2000                            |
| <b>Molecular Weight</b> | Calculated MW: 43 kDa ; Observed MW: 48 kDa |

**Antigen Information**

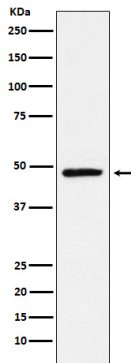
|                          |  |
|--------------------------|--|
| <b>Gene Name</b>         | NR2E1  |
| <b>Alternative Names</b> | hTII; nr2e1; TII; TLX; XTLL;;NR2E1             |
| <b>Gene ID</b>           |  |
| <b>SwissProt ID</b>      | Q9Y466   |
| <b>Immunogen</b>         | A synthesized peptide derived from human NR2E1 |

**Background**

Orphan receptor that binds DNA as a monomer to hormone response elements (HRE) containing an extended core motif half-site sequence 5'-AAGGTCA-3' in which the 5' flanking nucleotides participate in determining receptor specificity.

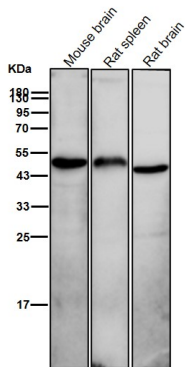
## Research Area

## Image Data



Western blot analysis of NR2E1 / Tailless expression in SH-SY5Y cell lysate.

All lanes use the Antibody at 1:2K dilution for 1 hour at room temperature.



All lanes use the Antibody at 1:2K dilution for 1 hour at room temperature.

