
Product Name: STUB1 Rabbit Monoclonal Antibody**Catalog #: AMRe84331**

For research use only.

Summary

Description	Recombinant rabbit monoclonal antibody
Host	Rabbit
Application	WB,ICC,FC,IP
Reactivity	Human,Mouse,Rat
Conjugation	Unconjugated
Modification	Unmodified
Isotype	IgG
Clonality	Monoclonal
Form	Liquid
Concentration	0.61mg/ml. The concentration of this product may be batch-dependent.
Storage	Aliquot and store at -20°C (valid for 12 months). Avoid freeze/thaw cycles.
Shipping	Ice bags
Buffer	Purified antibody in PBS with 0.05% sodium azide,0.05% protective protein and 50% glycerol.
Purification	Affinity Purification

Application

Dilution Ratio	WB 1:1000-1:2000,ICC 1:50-1:200,FC 1:20-1:100,IP 1:20-1:50
Molecular Weight	35 kDa

Antigen Information

Gene Name	STUB1
Alternative Names	STUB1; CHIP; HSPABP2; NY-CO-7; SDCCAG7; UBOX1;;STUB1
Gene ID	
SwissProt ID	Q9UNE7
Immunogen	A synthesized peptide derived from human STUB1

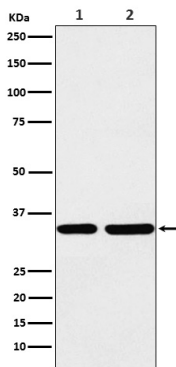
Background

E3 ubiquitin-protein ligase which targets misfolded chaperone substrates towards proteasomal degradation.Plays a role in the maintenance of mitochondrial morphology and promotes mitophagic removal of dysfunctional mitochondria; thereby acts as

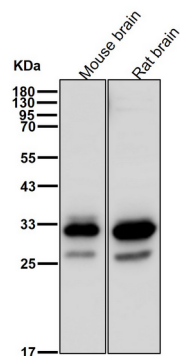
a protector against apoptosis in response to cellular stress.

Research Area

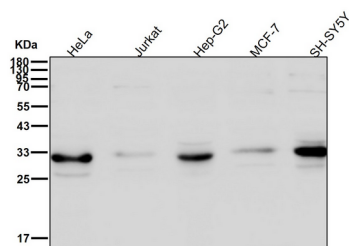
Image Data



Western blot analysis of STUB1 expression in (1) HEK293 cell lysate; (2) Mouse brain lysate.



All lanes use the Antibody at 1:2K dilution for 1 hour at room temperature.



All lanes use the Antibody at 1:2K dilution for 1 hour at room temperature.