
Product Name: Human IgG2 Rabbit Monoclonal Antibody**Catalog #: AMRe84328**

For research use only.

Summary

Description	Recombinant rabbit monoclonal antibody
Host	Rabbit
Application	WB,IHC,ICC/IF,ICC
Reactivity	Human
Conjugation	Unconjugated
Modification	Unmodified
Isotype	IgG
Clonality	Monoclonal
Form	Liquid
Concentration	
Storage	Aliquot and store at -20°C (valid for 12 months). Avoid freeze/thaw cycles.
Shipping	Ice bags
Buffer	Purified antibody in PBS with 0.05% sodium azide,0.05% protective protein and 50% glycerol.
Purification	Affinity Purification

Application

Dilution Ratio	WB 1:1000-1:2000,IHC 1:100-1:200,ICC/IF 1:50-1:200,ICC 1:50-1:200
Molecular Weight	Calculated MW: 36 kDa ; Observed MW: 53 kDa

Antigen Information

Gene Name	Human IgG2
Alternative Names	IGHG2; immunoglobulin Gm2; immunoglobulin heavy constant gamma 2 (G2m marker);;Human IgG2
Gene ID	
SwissProt ID	P01859
Immunogen	A synthesized peptide derived from human Human IgG2

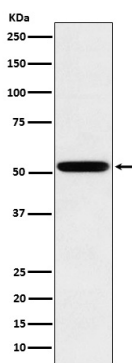
Background

Constant region of immunoglobulin heavy chains. Immunoglobulins, also known as antibodies, are membrane-bound or

secreted glycoproteins produced by B lymphocytes. In the recognition phase of humoral immunity, the membrane-bound immunoglobulins serve as receptors which, upon binding of a specific antigen, trigger the clonal expansion and differentiation of B lymphocytes into immunoglobulins-secreting plasma cells. Secreted immunoglobulins mediate the effector phase of humoral immunity, which results in the elimination of bound antigens

Research Area

Image Data



Western blot analysis of human IgG2 expression in Human spleen lysate.