

Product Name: Plastin L Rabbit Monoclonal Antibody**Catalog #: AMRe84325**

For research use only.

Summary

Description	Recombinant rabbit monoclonal antibody
Host	Rabbit
Application	WB,IHC,ICC/IF,ICC
Reactivity	Human,Mouse,Rat
Conjugation	Unconjugated
Modification	Unmodified
Isotype	IgG
Clonality	Monoclonal
Form	Liquid
Concentration	0.71mg/ml. The concentration of this product may be batch-dependent.
Storage	Aliquot and store at -20°C (valid for 12 months). Avoid freeze/thaw cycles.
Shipping	Ice bags
Buffer	Purified antibody in PBS with 0.05% sodium azide,0.05% protective protein and 50% glycerol.
Purification	Affinity Purification

Application

Dilution Ratio	WB 1:1000-1:2000,IHC 1:100-1:200,ICC/IF 1:50-1:200,ICC 1:50-1:200
Molecular Weight	70 kDa

Antigen Information

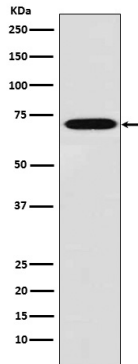
Gene Name	Plastin L
Alternative Names	CP64; L plastin; LC64P; LCP1; LPL; Lplastin; Plastin 2; PLS2;;Plastin 2
Gene ID	
SwissProt ID	P13796
Immunogen	A synthesized peptide derived from human Plastin 2

Background

Actin-binding protein. Plays a role in the activation of T-cells in response to costimulation through TCR/CD3 and CD2 or CD28. Modulates the cell surface expression of IL2RA/CD25 and CD69.

Research Area

Image Data



Western blot analysis of Plastin L expression in THP1 cell lysate.

All lanes use the Antibody at 1:1K dilution for 1 hour at room temperature.

