

Product Name: PICK1 Rabbit Monoclonal Antibody**Catalog #: AMRe84322**

For research use only.

Summary

Description	Recombinant rabbit monoclonal antibody
Host	Rabbit
Application	WB,FC,IP
Reactivity	Human,Mouse,Rat
Conjugation	Unconjugated
Modification	Unmodified
Isotype	IgG
Clonality	Monoclonal
Form	Liquid
Concentration	0.61mg/ml. The concentration of this product may be batch-dependent.
Storage	Aliquot and store at -20°C (valid for 12 months). Avoid freeze/thaw cycles.
Shipping	Ice bags
Buffer	Purified antibody in PBS with 0.05% sodium azide,0.05% protective protein and 50% glycerol.
Purification	Affinity Purification

Application

Dilution Ratio	WB 1:1000-1:2000,FC 1:20-1:100,IP 1:20-1:50
Molecular Weight	Calculated MW: 47 kDa ; Observed MW: 50 kDa

Antigen Information

Gene Name	PICK1
Alternative Names	PICK 1; Pick1; PRKCABP;;PICK1
Gene ID	
SwissProt ID	Q9NRD5
Immunogen	A synthesized peptide derived from human PICK1

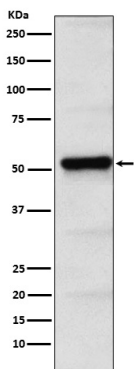
Background

Probable adapter protein that bind to and organize the subcellular localization of a variety of membrane proteins containing some PDZ recognition sequence. Involved in the clustering of various receptors, possibly by acting at the receptor

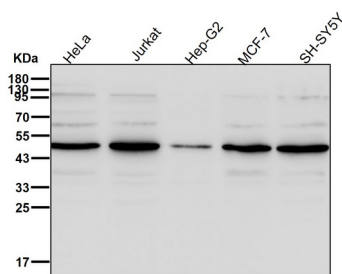
internalization level. Plays a role in synaptic plasticity by regulating the trafficking and internalization of AMPA receptors. May be regulated upon PRKCA activation. May regulate ASIC1/ASIC3 channel.

Research Area

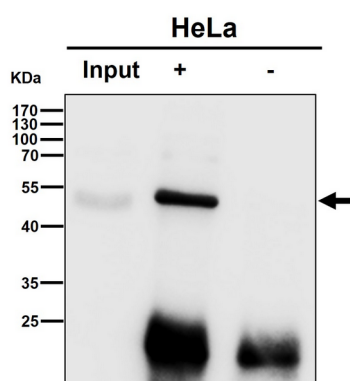
Image Data



Western blot analysis of PICK1 expression in HeLa cell lysate.



All lanes use the Antibody at 1:2K dilution for 1 hour at room temperature.



Immunoprecipitate (IP) analysis using the Antibody at 1:50 dilution. (wb at 1:2K dilution)